

Note: Centrifuge before opening to ensure complete recovery of vial contents.

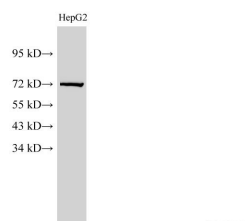
Description

Reactivity	Human, Mouse, Rat
Immunogen	Recombinant Rat Lamin-B1 protein expressed by E.coli
Host	Rabbit
Isotype	IgG
Purification	Antigen Affinity Purification
Conjugation	Unconjugated
Formulation	PBS with 0.05% Proclin300 and 50% glycerol, pH7.4.

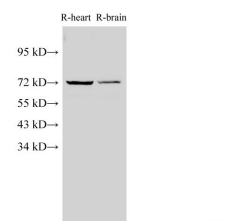
Applications Recommended Dilution

WB	1:250-1:500
IHC	1:200-1:600

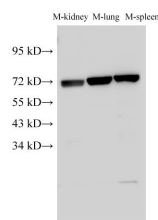
Data



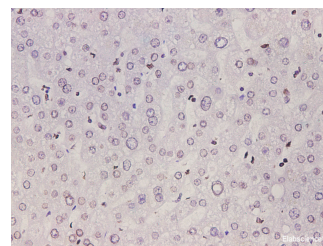
Western Blot analysis of HepG2 cell using Lamin B1 Polyclonal Antibody at dilution of 1:1000
Observed Mw:72 kDa
Calculated Mw:67 kDa



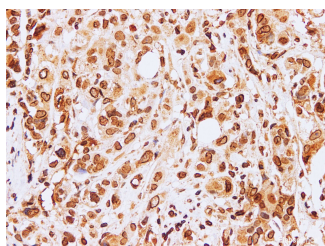
Western Blot analysis of Rat heart and Rat brain using Lamin B1 Polyclonal Antibody at dilution of 1:1000



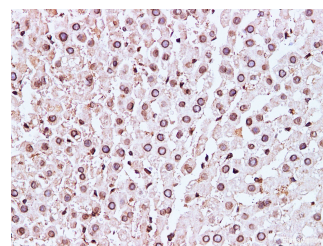
Western Blot analysis of Mouse kidney, Mouse lung and Mouse spleen using Lamin B1 Polyclonal Antibody at dilution of 1:1000



Immunohistochemistry of paraffin-embedded Human liver tissue using Lamin-B1 Polyclonal Antibody at dilution of 1:600(x400)



Immunohistochemistry of paraffin-embedded



Immunohistochemistry of paraffin-embedded Mouse

For Research Use Only

A Reliable Research Partner in Life Science and Medicine

Toll-free: 1-888-852-8623

Web: www.elabscience.com

Tel: 1-832-243-6086

Email: techsupport@elabscience.com

Fax: 1-832-243-6017

Lamin B1 Polyclonal Antibody

Catalog Number:E-AB-40257

1 Publications



Human breast cancer using Lamin B1 Polyclonal
Antibody at dilution of 1:100

liver using Lamin B1 Polyclonal Antibody at dilution
of 1:100

Preparation & Storage

Storage Store at -20°C. Avoid freeze / thaw cycles.

Background

The nuclear lamina consists of a two-dimensional matrix of proteins located next to the inner nuclear membrane. The lamin family of proteins make up the matrix and are highly conserved in evolution. During mitosis, the lamina matrix is reversibly disassembled as the lamin proteins are phosphorylated. Lamin proteins are thought to be involved in nuclear stability, chromatin structure and gene expression. Vertebrate lamins consist of two types, A and B. This gene encodes one of the two B type proteins, B1. Alternative splicing results in transcript variants and a duplication of this gene is associated with autosomal dominant adult-onset leukodystrophy (ADLD).

For Research Use Only

A Reliable Research Partner in Life Science and Medicine

Toll-free: 1-888-852-8623

Tel: 1-832-243-6086

Fax: 1-832-243-6017

Web: www.elabscience.com

Email: techsupport@elabscience.com