

# Cytochrome c1 Polyclonal Antibody

Catalog Number:E-AB-40271

2 Publications



**Note:** Centrifuge before opening to ensure complete recovery of vial contents.

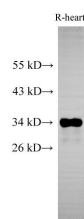
## Description

<b>Reactivity</b>	Human,Mouse,Rat
<b>Immunogen</b>	Recombinant Mouse Cytochrome c1, heme protein, mitochondrial protein
<b>Host</b>	Rabbit
<b>Isotype</b>	IgG
<b>Purification</b>	Antigen Affinity Purification
<b>Conjugation</b>	Unconjugated
<b>Formulation</b>	PBS with 0.05% Proclin300 and 50% glycerol, pH7.4.

## Applications Recommended Dilution

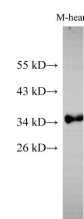
<b>WB</b>	1:500-1:1000
<b>IHC</b>	1:100-1:200

## Data

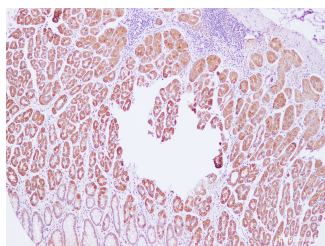


Western Blot analysis of Rat heart using Cytochrome c1 Polyclonal Antibody at dilution of 1:500

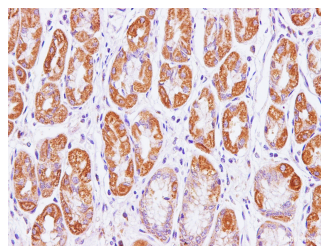
**Observed Mw:34 kDa**  
**Calculated Mw:35,29 kDa**



Western Blot analysis of Mouse heart using Cytochrome c1 Polyclonal Antibody at dilution of 1:500



Immunohistochemistry of paraffin-embedded Human stomach using Cytochrome c1 Polyclonal Antibody at dilution of 1:100(100×)



Immunohistochemistry of paraffin-embedded Human stomach using Cytochrome c1 Polyclonal Antibody at dilution of 1:100(400×)

## Preparation & Storage

**Storage** Store at -20°C. Avoid freeze / thaw cycles.

## Background

This gene encodes a subunit of the cytochrome bc1 complex, which plays an important role in the mitochondrial respiratory chain by transferring electrons from the Rieske iron-sulfur protein to cytochrome c. Mutations in this gene may cause mitochondrial complex III deficiency, nuclear type 6.

## For Research Use Only

A Reliable Research Partner in Life Science and Medicine

Toll-free: 1-888-852-8623

Web: [www.elabscience.com](http://www.elabscience.com)

Tel: 1-832-243-6086

Email: [techsupport@elabscience.com](mailto:techsupport@elabscience.com)

Fax: 1-832-243-6017