

CRP Polyclonal Antibody

Catalog No. E-AB-40277

Note: Centrifuge before opening to ensure complete recovery of vial contents.

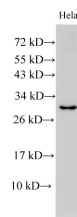
Description

Reactivity	Human, Mouse, Rat
Immunogen	Recombinant Rat C-reactive protein
Host	Rabbit
Isotype	IgG
Purification	Affinity Purification
Conjugation	Unconjugated
Buffer	PBS with 0.05% Proclin300 and 50% glycerol, pH7.4.

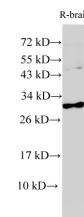
Applications Recommended Dilution

WB 1:500-1:2000 IHC
1:100-1:200

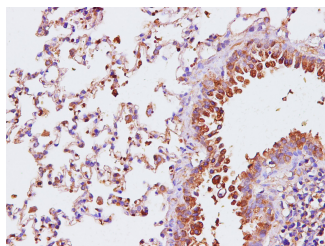
Data



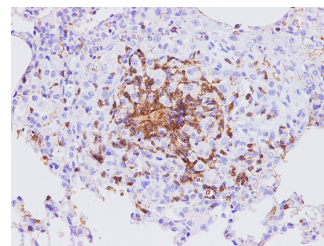
Western Blot analysis of HeLa cells using CRP Polyclonal Antibody at dilution of 1:1000
Observed Mw:30kDa
Calculated Mw:25kDa



Western Blot analysis of Rat brain using CRP Polyclonal Antibody at dilution of 1:1000



Immunohistochemistry of paraffin-embedded Rat lung using CRP Polyclonal Antibody at dilution of 1:100



Immunohistochemistry of paraffin-embedded Mouse lung using Crp Polyclonal Antibody at dilution of 1:100

Preparation & Storage

Storage Store at -20°C. Avoid freeze / thaw cycles.

For Research Use Only

Background

C-reactive protein (CRP) is an acute-phase serum protein synthesized by the liver in response to interleukin-6 (IL-6) during inflammation. The name of CRP derives from its ability to react with the C polysaccharide of *Streptococcus pneumoniae*. CRP is an annular, pentameric protein that belongs to the pentraxin family of proteins. CRP displays several functions associated with host defense: it promotes agglutination, bacterial capsular swelling, phagocytosis and complement fixation through its calcium-dependent binding to phosphorylcholine. It is used mainly as a marker of inflammation.