

# Recombinant Human CHK1/CHEK1 Protein (GST Tag)

Catalog Number:PKSH030410



**Note:** Centrifuge before opening to ensure complete recovery of vial contents.

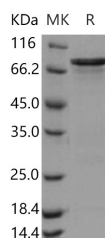
## Description

<b>Synonyms</b>	CHK1
<b>Species</b>	Human
<b>Expression Host</b>	Baculovirus-Insect Cells
<b>Sequence</b>	Met 1-Thr476
<b>Accession</b>	AAM78553.1
<b>Calculated Molecular Weight</b>	80.7 kDa
<b>Observed molecular weight</b>	80.7 kDa
<b>Tag</b>	N-GST
<b>Bioactivity</b>	The specific activity was determined to be 32 nmol/min/mg using CHKtide peptide (KKKVSRSGLYRSPSPENLNRPR) as substrate.

## Properties

<b>Purity</b>	> 90 % as determined by reducing SDS-PAGE.
<b>Endotoxin</b>	< 1.0 EU per µg of the protein as determined by the LAL method.
<b>Storage</b>	Store at < -20°C, stable for 6 months. Please minimize freeze-thaw cycles.
<b>Shipping</b>	This product is provided as liquid. It is shipped at frozen temperature with blue ice/gel packs. Upon receipt, store it immediately at < - 20°C.
<b>Formulation</b>	Supplied as sterile solution of 20mM Tris, 500mM NaCl, pH 7.4, 10% glycerol, 2mM GSH
<b>Reconstitution</b>	Not Applicable

## Data



> 90 % as determined by reducing SDS-PAGE.

## Background

CHK1 / CHEK1 contains 1 protein kinase domain and belongs to the protein kinase superfamily, CAMK Ser/Thr protein kinase family, NIM1 subfamily. It is a member of checkpoint kinases (Chks). Chks Checkpoint kinases (Chks) are serine/threonine kinases that are involved in the control of the cell cycle. There are two subtypes of chks that have so far been identified, CHK1 / CHEK1 and Chk2. They are essential components to delay cell cycle progression in normal and damaged cells and can act at all three cell cycle checkpoints. Chks are activated by phosphorylation. ATR kinase phosphorylates CHK1 / CHEK1 in response to single strand DNA breaks and ATM kinase phosphorylates Chk2 in response to double strand breaks. Chks phosphorylate Cdc25 phosphatase at Ser216, which leads to Cdc25 sequestration in the cytoplasm. Chks have a role in the physiological stress of hypoxia/reoxygenation. CHK1 / CHEK1 is required for checkpoint mediated cell cycle arrest in response to DNA damage or the presence of unreplicated DNA. CHK1 / CHEK1

## For Research Use Only

A Reliable Research Partner in Life Science and Medicine

Toll-free: 1-888-852-8623

Web: [www.elabscience.com](http://www.elabscience.com)

Tel: 1-832-243-6086

Email: [techsupport@elabscience.com](mailto:techsupport@elabscience.com)

Fax: 1-832-243-6017

# Recombinant Human CHK1/CHEK1 Protein (GST Tag)

Catalog Number:PKSH030410



may also negatively regulate cell cycle progression during unperturbed cell cycles.

---

## For Research Use Only

A Reliable Research Partner in Life Science and Medicine

Toll-free: 1-888-852-8623

Tel: 1-832-243-6086

Fax: 1-832-243-6017

Web: [www.elabscience.com](http://www.elabscience.com)

Email: [techsupport@elabscience.com](mailto:techsupport@elabscience.com)