

Recombinant Human SynCam/CADM1 Protein (His Tag)



Catalog Number:PKSH031228

Note: Centrifuge before opening to ensure complete recovery of vial contents.

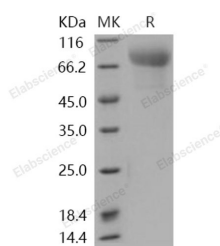
Description

Synonyms	BL2;IGSF4;IGSF4A;Necl-2;NECL2;RA175;sgIGSF;ST17;sTSLC-1;SYNCAM;synCAM1;TSLC1
Species	Human
Expression Host	HEK293 Cells
Sequence	Met 1-His 374
Accession	NP_055148.3
Calculated Molecular Weight	38.5 kDa
Observed molecular weight	70-80 kDa
Tag	C-His
Bioactivity	Immobilized recombinant human CADM1 at 2 µg/ml (100 µl/well) can bind biotinylated human CRTAM with a linear range of 12.5-400 ng/ml.

Properties

Purity	> 94 % as determined by reducing SDS-PAGE.
Endotoxin	< 1.0 EU per µg of the protein as determined by the LAL method.
Storage	Generally, lyophilized proteins are stable for up to 12 months when stored at -20 to -80°C. Reconstituted protein solution can be stored at 4-8°C for 2-7 days. Aliquots of reconstituted samples are stable at < -20°C for 3 months.
Shipping	This product is provided as lyophilized powder which is shipped with ice packs.
Formulation	Lyophilized from sterile PBS, pH 7.4 Normally 5 % - 8 % trehalose, mannitol and 0.01% Tween80 are added as protectants before lyophilization. Please refer to the specific buffer information in the printed manual.
Reconstitution	Please refer to the printed manual for detailed information.

Data



> 94 % as determined by reducing SDS-PAGE.

Background

Members of the immunoglobulin superfamily often play key roles in intercellular adhesion. IGSF4 is a novel immunoglobulin (Ig)-like intercellular adhesion molecule. Three Ig-like domains are included in the extracellular domain of IGSF4 and mediate homophilic or heterophilic interactions independently of Ca²⁺. The cytoplasmic domain of IGSF4 contains the binding motifs that connect to actin fibers. Since IGSF4 has been characterized by several independent research groups, this molecule is called by three names, TSLC1, SgIGSF and SynCAM. IGSF4 was first characterized as a

For Research Use Only

A Reliable Research Partner in Life Science and Medicine

Toll-free: 1-888-852-8623

Web: www.elabscience.com

Tel: 1-832-243-6086

Email: techsupport@elabscience.com

Fax: 1-832-243-6017

Recombinant Human SynCam/CADM1 Protein (His Tag)



Catalog Number:PKSH031228

tumor suppressor of non-small cell lung cancer and termed TSLC1. It is a single-pass type I membrane protein which belongs to the nectin family, which may be involved in neuronal migration, axon growth, pathfinding, and fasciculation on the axons of differentiating neurons. In addition, CADM1 may play diverse roles in the spermatogenesis including in the adhesion of spermatocytes and spermatids to Sertoli cells and for their normal differentiation into mature spermatozoa. In neuroblastoma, loss of CADM1 expression has recently been found in disseminated tumours with adverse outcome, prompting us to investigate its role in neuroblastoma tumour progression. The downregulation of CADM1 tumour suppressor gene expression is a critical event in neuroblastoma pathogenesis resulting in tumour progression.

For Research Use Only

A Reliable Research Partner in Life Science and Medicine

Toll-free: 1-888-852-8623

Tel: 1-832-243-6086

Fax: 1-832-243-6017

Web: www.elabscience.com

Email: techsupport@elabscience.com