

Recombinant Human CLEC1B/CLEC2 Protein (His Tag)

Catalog Number:PKSH031326



Note: Centrifuge before opening to ensure complete recovery of vial contents.

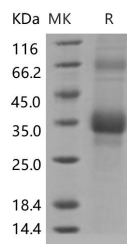
Description

Synonyms	1810061I13Rik;CLEC2;CLEC2B;PRO1384;QDED721
Species	Human
Expression Host	HEK293 Cells
Sequence	Gln 58-Pro 229
Accession	NP_057593.3
Calculated Molecular Weight	22.7 kDa
Observed molecular weight	35-38 kDa
Tag	N-His
Bioactivity	Immobilized human Podoplanin at 10 µg/mL (100 µl/well) can bind biotinylated human CLEC1B-His, The EC50 of biotinylated human CLEC1B-His is 0.71 µg/mL.

Properties

Purity	> 76 % as determined by reducing SDS-PAGE.
Endotoxin	< 1.0 EU per µg of the protein as determined by the LAL method.
Storage	Generally, lyophilized proteins are stable for up to 12 months when stored at -20 to -80°C. Reconstituted protein solution can be stored at 4-8°C for 2-7 days. Aliquots of reconstituted samples are stable at < -20°C for 3 months.
Shipping	This product is provided as lyophilized powder which is shipped with ice packs.
Formulation	Lyophilized from sterile PBS, pH 7.4 Normally 5 % - 8 % trehalose, mannitol and 0.01% Tween80 are added as protectants before lyophilization. Please refer to the specific buffer information in the printed manual.
Reconstitution	Please refer to the printed manual for detailed information.

Data



> 76 % as determined by reducing SDS-PAGE.

Background

CLEC1B, also known as CLEC2, is a C-type lectin-like receptor expressed in myeloid cells and NK cells. Natural killer (NK) cells express multiple calcium-dependent (C-type) lectin-like receptors, such as CD94 and NKG2D, that interact with major histocompatibility complex class I molecules and either inhibit or activate cytotoxicity and cytokine secretion. CLEC2 acts as a receptor for the platelet-aggregating snake venom protein rhodocytin. Rhodocytin binding leads to tyrosine phosphorylation and this promotes the binding of spleen tyrosine kinase (Syk) and initiation of downstream

For Research Use Only

A Reliable Research Partner in Life Science and Medicine

Toll-free: 1-888-852-8623

Web: www.elabscience.com

Tel: 1-832-243-6086

Email: techsupport@elabscience.com

Fax: 1-832-243-6017

Recombinant Human CLEC1B/CLEC2 Protein (His Tag)

Catalog Number:PKSH031326



tyrosine phosphorylation events and activation of PLC-gamma-2. CLEC2 contains 1 C-type lectin domain and is expressed preferentially in the liver. It acts as an attachment factor for human immunodeficiency virus type 1 (HIV-1) and facilitates its capture by platelets.

For Research Use Only

A Reliable Research Partner in Life Science and Medicine

Toll-free: 1-888-852-8623

Tel: 1-832-243-6086

Fax: 1-832-243-6017

Web: www.elabscience.com

Email: techsupport@elabscience.com