

Recombinant Human LRAP/ERAP2 Protein (His Tag)

Catalog Number:PKSH031454



Note: Centrifuge before opening to ensure complete recovery of vial contents.

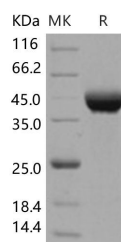
Description

Synonyms	FLJ23633;FLJ23701;FLJ23807;L-RAP;LRAP;LRAP.ERAP2
Species	Human
Expression Host	HEK293 Cells
Sequence	Ala 56-Thr 960
Accession	NP_071745.1
Calculated Molecular Weight	106 kDa
Observed molecular weight	115-125 kDa
Tag	N-His
Bioactivity	Measured by its ability to cleave the fluorogenic peptide substrate, Arg-7-amido-4-methylcoumarin (Arg-AMC). The specific activity is > 50 pmoles/min/μg.

Properties

Purity	> 98 % as determined by reducing SDS-PAGE.
Endotoxin	< 1.0 EU per μg of the protein as determined by the LAL method.
Storage	Generally, lyophilized proteins are stable for up to 12 months when stored at -20 to -80°C. Reconstituted protein solution can be stored at 4-8°C for 2-7 days. Aliquots of reconstituted samples are stable at < -20°C for 3 months.
Shipping	This product is provided as lyophilized powder which is shipped with ice packs.
Formulation	Lyophilized from sterile 12.5mM Tris, 75mM NaCl, pH 7.5, 50% glycerol Normally 5 % - 8 % trehalose, mannitol and 0.01% Tween80 are added as protectants before lyophilization. Please refer to the specific buffer information in the printed manual.
Reconstitution	Please refer to the printed manual for detailed information.

Data



> 98 % as determined by reducing SDS-PAGE.

Background

Leukocyte-derived arginine aminopeptidase (LRAP), also known as endoplasmic reticulum-aminopeptidase 2 (ERAP2), is the second identified aminopeptidase localized in the in the luminal side of endoplasmic reticulum (ER) processing antigenic peptides presented to major histocompatibility complex (MHC) class I molecules. It is a 960-amino acid protein with significant homology to placental leucine aminopeptidase and adipocyte-derived leucine aminopeptidase. LRAP preferentially hydrolyzes the basic residues Arg and Lys, and contains the HEXXH(X)18E zinc-binding motif, which is

For Research Use Only

A Reliable Research Partner in Life Science and Medicine

Toll-free: 1-888-852-8623

Web: www.elabscience.com

Tel: 1-832-243-6086

Email: techsupport@elabscience.com

Fax: 1-832-243-6017

Recombinant Human LRAP/ERAP2 Protein (His Tag)

Catalog Number:PKSH031454



the characteristic of the M1 family of zinc metallopeptidases which also includes PILS/ARTS1/ERAP1 and LNPEP/PLAP. Induced by interferon-gamma, LRAP is able to trim various MHC class I antigenic peptide precursors.

For Research Use Only

A Reliable Research Partner in Life Science and Medicine

Toll-free: 1-888-852-8623

Tel: 1-832-243-6086

Fax: 1-832-243-6017

Web: www.elabscience.com

Email: techsupport@elabscience.com