

Recombinant Human Ephrin-A1/EFNA1 Protein (His Tag)



Catalog Number:PKSH032388

Note: Centrifuge before opening to ensure complete recovery of vial contents.

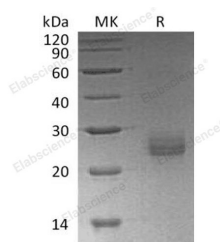
Description

| | |
|------------------------------------|---|
| Synonyms | Ephrin-A1;EPH-Related Receptor Tyrosine Kinase Ligand 1;LERK-1;Immediate Early Response Protein B61;Tumor Necrosis Factor Alpha-Induced Protein 4;TNF Alpha-Induced Protein 4;EFNA1;EPLG1;LERK1;TNFAIP4 |
| Species | Human |
| Expression Host | HEK293 Cells |
| Sequence | Asp19-Ser182 |
| Accession | AAH32698.1 |
| Calculated Molecular Weight | 20.4 kDa |
| Observed molecular weight | 24-28 kDa |
| Tag | C-His |

Properties

| | |
|-----------------------|--|
| Purity | > 95 % as determined by reducing SDS-PAGE. |
| Endotoxin | < 1.0 EU per µg of the protein as determined by the LAL method. |
| Storage | Generally, lyophilized proteins are stable for up to 12 months when stored at -20 to -80°C. Reconstituted protein solution can be stored at 4-8°C for 2-7 days. Aliquots of reconstituted samples are stable at < -20°C for 3 months. |
| Shipping | This product is provided as lyophilized powder which is shipped with ice packs. |
| Formulation | Lyophilized from a 0.2 µm filtered solution of 20mM Tris-HCl, 4% Trehalose, 4% Mannitol, 0.02% Tween 80, pH 8.0. Normally 5 % - 8 % trehalose, mannitol and 0.01% Tween80 are added as protectants before lyophilization. Please refer to the specific |
| Reconstitution | Please refer to the printed manual for detailed information. |

Data



> 95 % as determined by reducing SDS-PAGE.

Background

Ephrin-A1 is a member of the A-type ephrin family of cell surface proteins that function as ligands for the A-type Eph receptor tyrosine kinase family. Ephrin-A1 can be induced by TNF and IL1B. Its expression levels can be down-regulated in primary glioma tissues compared to the normal tissues. The soluble monomeric form is expressed in the glioblastoma multiforme (GBM) and breast cancer cells. Soluble Ephrin-A1 is necessary for the transformation of HeLa and SK-BR3 cells and participates in the relocalization of EPHA2 away from sites of cell-cell contact during transformation. Ephrin-

For Research Use Only

A Reliable Research Partner in Life Science and Medicine

Toll-free: 1-888-852-8623

Web: www.elabscience.com

Tel: 1-832-243-6086

Email: techsupport@elabscience.com

Fax: 1-832-243-6017

Recombinant Human Ephrin-A1/EFNA1 Protein (His Tag)

Catalog Number:PKSH032388



A1 plays an important role in angiogenesis and tumor neovascularization.

For Research Use Only

A Reliable Research Partner in Life Science and Medicine

Toll-free: 1-888-852-8623

Tel: 1-832-243-6086

Fax: 1-832-243-6017

Web: www.elabscience.com

Email: techsupport@elabscience.com