

Recombinant Human LAMTOR3/MP1 Protein (His Tag)

Catalog Number:PKSH032742



Note: Centrifuge before opening to ensure complete recovery of vial contents.

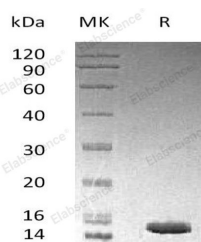
Description

Synonyms	Ragulator Complex Protein LAMTOR3;Late Endosomal/Lysosomal Adaptor and MAPK and MTOR Activator 3;MEK-Binding Partner 1;Mp1;Mitogen-Activated Protein Kinase Kinase 1-Interacting Protein 1;Mitogen-Activated Protein Kinase Scaffold Protein 1;LAMTOR3;MAP2K1IP1;MAPKSP1
Species	Human
Expression Host	E.coli
Sequence	Met 1-Val124
Accession	Q9UHA4
Calculated Molecular Weight	15.8 kDa
Observed molecular weight	15 kDa
Tag	N-His

Properties

Purity	> 95 % as determined by reducing SDS-PAGE.
Endotoxin	< 1.0 EU per µg of the protein as determined by the LAL method.
Storage	Store at < -20°C, stable for 6 months. Please minimize freeze-thaw cycles.
Shipping	This product is provided as liquid. It is shipped at frozen temperature with blue ice/gel packs. Upon receipt, store it immediately at < -20°C.
Formulation	Supplied as a 0.2 µm filtered solution of 20mM Tris-HCl, 100mM NaCl, 5mM DTT, 30% Glycerol, pH 8.0.
Reconstitution	Not Applicable

Data



> 95 % as determined by reducing SDS-PAGE.

Background

Mitogen-Activated Protein Kinase Scaffold Protein 1 (MAPKSP1) was identified as an interacting protein that belongs to the LAMTOR3 family. MAPKSP1 restricted to late endosomes by the mitogen-activated protein-binding protein-interacting protein, and binds specifically to MAP kinase kinase MAP2K1/MEK1, MAP kinase MAPK3/ERK1, and MAP kinase MAPK1/ERK2. MAPKSP1 interacts with MAP2K1/MEK1 and MAPK2 and enhances the activation of MAPK2, and thus is thought to function as an adaptor to enhance the efficiency of the MAP kinase cascade.

For Research Use Only

A Reliable Research Partner in Life Science and Medicine

Toll-free: 1-888-852-8623

Web: www.elabscience.com

Tel: 1-832-243-6086

Email: techsupport@elabscience.com

Fax: 1-832-243-6017