

Recombinant Mouse EphA6/EHK-2 Protein (Fc Tag)

Catalog Number:PKSM040576



Note: Centrifuge before opening to ensure complete recovery of vial contents.

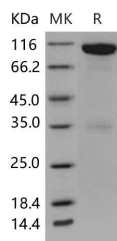
Description

Synonyms	Ehk2;Hek12;m-ehk2
Species	Mouse
Expression Host	HEK293 Cells
Sequence	Met 1-Gln 546
Accession	NP_031964.2
Calculated Molecular Weight	85.0 kDa
Observed molecular weight	110 kDa
Tag	C-hFc
Bioactivity	Immobilized mouse EphrinA3 at 1 µg/ml (100 µl/well) can bind mouse EPHA6 / chimera with a linear ranger of 6. 25-400 ng/ml.

Properties

Purity	> 90 % as determined by reducing SDS-PAGE.
Endotoxin	< 1.0 EU per µg of the protein as determined by the LAL method.
Storage	Generally, lyophilized proteins are stable for up to 12 months when stored at -20 to -80°C. Reconstituted protein solution can be stored at 4-8°C for 2-7 days. Aliquots of reconstituted samples are stable at < -20°C for 3 months.
Shipping	This product is provided as lyophilized powder which is shipped with ice packs.
Formulation	Lyophilized from sterile PBS, pH 7.4 Normally 5 % - 8 % trehalose, mannitol and 0.01% Tween80 are added as protectants before lyophilization. Please refer to the specific buffer information in the printed manual.
Reconstitution	Please refer to the printed manual for detailed information.

Data



> 90 % as determined by reducing SDS-PAGE.

Background

Ephrin type-A receptor 6, also known as EphA6 or EHK2, belongs to the ephrin receptor subfamily of the protein-tyrosine kinase family which 16 known receptors (14 found in mammals) are involved: EPHA1, EPHA2, EPHA3, EPHA4, EPHA5, EPHA6, EPHA7, EPHA8, EPHA9, EPHA10, EPHB1, EPHB2, EPHB3, EPHB4, EPHB5, EPHB6. The Eph family of receptor tyrosine kinases (comprising EphA and EphB receptors) has been implicated in synapse formation and the regulation of synaptic function and plasticity⁶. Eph receptor-mediated signaling, which is triggered by ephrins⁷, probably modifies the properties of synapses during synaptic activation and remodeling. Ephrin receptors are components

For Research Use Only

A Reliable Research Partner in Life Science and Medicine

Toll-free: 1-888-852-8623

Web: www.elabscience.com

Tel: 1-832-243-6086

Email: techsupport@elabscience.com

Fax: 1-832-243-6017

Recombinant Mouse EphA6/EHK-2 Protein (Fc Tag)

Catalog Number: PKSM040576



of cell signalling pathways involved in animal growth and development, forming the largest sub-family of receptor tyrosine kinases (RTKs). Ligand-mediated activation of Ephs induce various important downstream effects and Eph receptors have been studied for their potential roles in the development of cancer. In the vomeronasal system, Ephrin-A5/EphA6 interactions mediate attraction or adhesion rather than repulsion.

For Research Use Only

A Reliable Research Partner in Life Science and Medicine

Toll-free: 1-888-852-8623

Tel: 1-832-243-6086

Fax: 1-832-243-6017

Web: www.elabscience.com

Email: techsupport@elabscience.com