

# Recombinant Mouse Carboxylesterase 1D/SES1D Protein (His Tag)



Catalog Number:PKSM040714

**Note:** Centrifuge before opening to ensure complete recovery of vial contents.

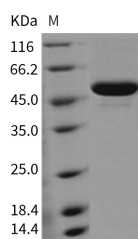
## Description

<b>Synonyms</b>	CES3;carboxylesterase 3;carboxylesterase 3 (brain);EC 3.1.1;EC 3.1.1.1;ES31FLJ21736;Esterase 31;Liver carboxylesterase 31 homolog
<b>Species</b>	Mouse
<b>Expression Host</b>	HEK293 Cells
<b>Sequence</b>	Met1-Glu561
<b>Accession</b>	NP_444430.2
<b>Calculated Molecular Weight</b>	60.8 kDa
<b>Observed molecular weight</b>	53 kDa
<b>Tag</b>	C-His
<b>Bioactivity</b>	Measured by its ability to hydrolyze p-nitrophenylacetate. The specific activity is > 11000 pmoles/min/μg.

## Properties

<b>Purity</b>	> 90 % as determined by reducing SDS-PAGE.
<b>Endotoxin</b>	< 1.0 EU per μg of the protein as determined by the LAL method.
<b>Storage</b>	Generally, lyophilized proteins are stable for up to 12 months when stored at -20 to -80°C. Reconstituted protein solution can be stored at 4-8°C for 2-7 days. Aliquots of reconstituted samples are stable at < -20°C for 3 months.
<b>Shipping</b>	This product is provided as lyophilized powder which is shipped with ice packs.
<b>Formulation</b>	Lyophilized from sterile PBS, pH 7.4 Normally 5 % - 8 % trehalose, mannitol and 0.01 % Tween80 are added as protectants before lyophilization. Please refer to the specific buffer information in the printed manual.
<b>Reconstitution</b>	Please refer to the printed manual for detailed information.

## Data



> 90 % as determined by reducing SDS-PAGE.

## Background

Mouse Carboxylesterases 3 (CES3) is a member of five families of mammalian carboxylesterases that plays a role in catalyzing hydrolytic and transesterification reactions with xenobiotics, anticancer pro-drugs and narcotics, and detoxifying organophosphates and insecticides. Mammalian carboxylesterases are enzymes with broad substrate specificities ranging from small molecule esters to longchain fatty acid esters. It is shown that CESs has key roles in the metabolism of a wide variety of clinical drugs, illicit narcotics and chemical nerve agents. CES3 is broadly expressed in

## For Research Use Only

A Reliable Research Partner in Life Science and Medicine

Toll-free: 1-888-852-8623

Web: [www.elabscience.com](http://www.elabscience.com)

Tel: 1-832-243-6086

Email: [techsupport@elabscience.com](mailto:techsupport@elabscience.com)

Fax: 1-832-243-6017

# Recombinant Mouse Carboxylesterase 1D/SES1D Protein (His Tag)



Catalog Number: PKSM040714

---

liver, colon and brain.

---

## For Research Use Only

A Reliable Research Partner in Life Science and Medicine

Toll-free: 1-888-852-8623

Tel: 1-832-243-6086

Fax: 1-832-243-6017

Web: [www.elabscience.com](http://www.elabscience.com)

Email: [techsupport@elabscience.com](mailto:techsupport@elabscience.com)