

# Recombinant Mouse BCL2L1/Bcl-XL Protein (aa 1-212, His Tag)

**DIA • AN**<sup>®</sup>  
by Elabscience

Catalog Number: PKSM040918

**Note:** Centrifuge before opening to ensure complete recovery of vial contents.

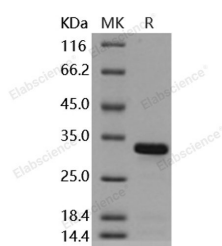
## Description

<b>Synonyms</b>	Bcl(X)L;bcl-x;Bcl-XL;bcl2-L-1;Bcl2l;BclX
<b>Species</b>	Mouse
<b>Expression Host</b>	E.coli
<b>Sequence</b>	Met 1-Arg 212
<b>Accession</b>	Q64373-1
<b>Calculated Molecular Weight</b>	25.2 kDa
<b>Observed molecular weight</b>	33 kDa
<b>Tag</b>	C-His
<b>Bioactivity</b>	1. Immobilized human BID at 10 µg/mL (100 µl/well) can bind biotinylated mouse BCL2L1, The EC50 of biotinylated mouse BCL2L1 is 5.6 ng/mL. 2. Immobilized mouse BID at 10 µg/mL (100 µl/well) can bind biotinylated mouse BCL2L1, The EC50 of biotinylated mouse BCL2L1 is 7.1 ng/mL.

## Properties

<b>Purity</b>	> 95 % as determined by reducing SDS-PAGE.
<b>Endotoxin</b>	Please contact us for more information.
<b>Storage</b>	Generally, lyophilized proteins are stable for up to 12 months when stored at -20 to -80°C. Reconstituted protein solution can be stored at 4-8°C for 2-7 days. Aliquots of reconstituted samples are stable at < -20°C for 3 months.
<b>Shipping</b>	This product is provided as lyophilized powder which is shipped with ice packs.
<b>Formulation</b>	Lyophilized from sterile PBS, pH 7.5 Normally 5 % - 8 % trehalose, mannitol and 0.01 % Tween80 are added as protectants before lyophilization. Please refer to the specific buffer information in the printed manual.
<b>Reconstitution</b>	Please refer to the printed manual for detailed information.

## Data



> 95 % as determined by reducing SDS-PAGE.

## Background

B-cell lymphoma-extra large (Bcl-xl) is a transmembrane molecule in the mitochondria. Bcl-xL (BCL2L1), belongs to the Bcl-2 family. Members of the bcl-2 family encode proteins that function either to promote or to inhibit apoptosis. Antiapoptotic members such as Bcl-2 and Bcl-xL prevent PCD in response to a wide variety of stimuli to take part in cancer survival. Conversely, proapoptotic proteins, exemplified by Bax and Bak, can accelerate death and in some

## For Research Use Only

A Reliable Research Partner in Life Science and Medicine

Toll-free: 1-888-852-8623

Web: [www.elabscience.com](http://www.elabscience.com)

Tel: 1-832-243-6086

Email: [techsupport@elabscience.com](mailto:techsupport@elabscience.com)

Fax: 1-832-243-6017

# Recombinant Mouse BCL2L1/Bcl-XL Protein (aa 1-212, His Tag)



Catalog Number: PKSM040918

---

instances are sufficient to cause apoptosis independent of additional signals. The crystal and solution structures of a Bcl-2 family member, Bcl-xL is like this: The structures consist of two central, primarily hydrophobic  $\alpha$ -helices, which are surrounded by amphipathic helices. A 60-residue loop connecting helices  $\alpha 1$  and  $\alpha 2$  was found to be flexible and non-essential for anti-apoptotic activity. Bcl-xL is characterized as important factors in autophagy, inhibiting Beclin 1-mediated autophagy by binding to Beclin 1. In addition, Beclin 1, Bcl-2 and Bcl-xL can cooperate with Atg5 or Ca<sup>2+</sup> to regulate both autophagy and apoptosis. Bcl-xL is also implicated in anoxia induced cell death. The pathway is initiated by the loss of function of the prosurvival Bcl-2 family members Mcl-1 and Bcl-2 / Bcl-XL, resulting in Bax- or Bak-dependent release of cytochrome c and subsequent caspase-9-dependent cell death. Thus, Bcl-xL, the well-characterized apoptosis guards, appears to be important in cell death.

---

## For Research Use Only

A Reliable Research Partner in Life Science and Medicine

Toll-free: 1-888-852-8623

Web: [www.elabscience.com](http://www.elabscience.com)

Tel: 1-832-243-6086

Email: [techsupport@elabscience.com](mailto:techsupport@elabscience.com)

Fax: 1-832-243-6017