

Note: Centrifuge before opening to ensure complete recovery of vial contents.

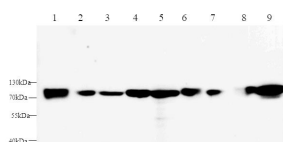
Description

Reactivity	Human,Mouse,Rat
Immunogen	Recombinant Mouse Afp protein expressed by E.coli
Host	Rabbit
Isotype	IgG
Purification	Antigen Affinity Purification
Conjugation	Unconjugated
Formulation	PBS with 0.05% Proclin300 and 50% glycerol, pH7.4.

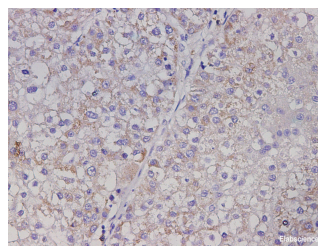
Applications Recommended Dilution

WB	1:500-1:1000
IHC	1:200-1:500
IF	1:100-1:200

Data



Western blot with Afp Polyclonal antibody at dilution of 1:1000.lane 1:Hep G2 whole cell lysate,lane 2:Mouse placenta,lane 3:Rat placenta,lane 4:Mouse Fetal liver,lane 5:Rat Fetal liver,lane 6: Mouse liver,lane 7:Mouse kidney,lane 8:Rat liver,lane 9:Rat kidney
Observed Mw:73 kDa
Calculated Mw:67 kDa



Immunohistochemistry of paraffin-embedded Mouse liver using AFP Polyclonal Antibody at dilution of 1:50

Preparation & Storage

Storage Store at -20°C. Avoid freeze / thaw cycles.

Background

This gene encodes alpha-fetoprotein, a major plasma protein produced by the yolk sac and the liver during fetal life. Alpha-fetoprotein expression in adults is often associated with hepatoma or teratoma. However, hereditary persistence of alpha-fetoprotein may also be found in individuals with no obvious pathology. The protein is thought to be the fetal counterpart of serum albumin, and the alpha-fetoprotein and albumin genes are present in tandem in the same transcriptional orientation on chromosome 4. Alpha-fetoprotein is found in monomeric as well as dimeric and trimeric forms, and binds copper, nickel, fatty acids and bilirubin. The level of alpha-fetoprotein in amniotic fluid is used to measure renal loss of protein to screen for spina bifida and anencephaly.

For Research Use Only

A Reliable Research Partner in Life Science and Medicine

Toll-free: 1-888-852-8623

Web: www.elabscience.com

Tel: 1-832-243-6086

Email: techsupport@elabscience.com

Fax: 1-832-243-6017