

Recombinant Human VAPB Protein (His Tag)

Catalog Number:PKSH033405



Note: Centrifuge before opening to ensure complete recovery of vial contents.

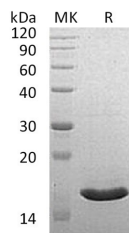
Description

Synonyms	Vesicle-associated membrane protein-associated protein B/C;VAMP-B/VAMP-C;VAMP-associated protein B/C;VAP-B/VAP-C
Species	Human
Expression Host	E.coli
Sequence	Ala2-Pro132
Accession	O95292
Calculated Molecular Weight	16.0 kDa
Observed molecular weight	16 kDa
Tag	C-His

Properties

Purity	> 90 % as determined by reducing SDS-PAGE.
Endotoxin	< 1.0 EU per µg of the protein as determined by the LAL method.
Storage	Generally, lyophilized proteins are stable for up to 12 months when stored at -20 to -80°C. Reconstituted protein solution can be stored at 4-8°C for 2-7 days. Aliquots of reconstituted samples are stable at < -20°C for 3 months.
Shipping	This product is provided as lyophilized powder which is shipped with ice packs.
Formulation	Lyophilized from a 0.2 µm filtered solution of 20mM Tris-HCl, 100mM NaCl, pH 8.0. Normally 5 % - 8 % trehalose, mannitol and 0.01% Tween80 are added as protectants before lyophilization. Please refer to the specific buffer information in the print
Reconstitution	Please refer to the printed manual for detailed information.

Data



> 90 % as determined by reducing SDS-PAGE.

Background

vesicle-associated membrane protein-associated protein B/C (VAPB) is presents in mitochondria-associated membranes that are endoplasmic reticulum membrane regions closely apposed to the outer mitochondrial membrane. It can form homodimer; and heterodimer with VAPA. It also interacts with VAMP1; VAMP2; HCV NS5A; NS5B; ZFYVE27 and RMDN3. VAPB participates in the endoplasmic reticulum unfolded protein response (UPR) by inducing ERN1/IRE1 activity. It is involved in cellular calcium homeostasis regulation.

For Research Use Only

A Reliable Research Partner in Life Science and Medicine

Toll-free: 1-888-852-8623

Web: www.elabscience.com

Tel: 1-832-243-6086

Email: techsupport@elabscience.com

Fax: 1-832-243-6017