

ALDH1A1 Monoclonal Antibody

Catalog No. E-AB-27014

Note: Centrifuge before opening to ensure complete recovery of vial contents.

Description

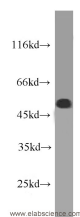
Reactivity	Human,Mouse,Rat
Immunogen	Fusion protein of ALDH1A1
Host	Mouse
Isotype	IgG1
Clone	Clone:395
Purification	Protein G purification
Conjugation	Unconjugated
Buffer	PBS with 0.1% sodium azide, 50% glycerol, PH7.3

Applications

Recommended Dilution

IF 1:20-1:200

Data



Western Blot analysis of MCF7 cells using ALDH1A1
Monoclonal Antibody at dilution of 1:500

Observed Mw:52kDa

Calculated Mw:501aa, 55kDa

Preparation & Storage

Storage Store at -20°C. Avoid freeze / thaw cycles.

Background

ALDH1A1(Aldehyde dehydrogenase family 1 member A1),also named as ALDC,ALDH1 and PUMB1,belongs to the aldehyde dehydrogenase family. The ALDH1A1 gene encodes a liver cytosolic isoform of acetaldehyde dehydrogenase,an enzyme involved in the major pathway of alcohol metabolism after alcohol dehydrogenase. ALDH1A1 plays a critical role in protection against oxidative stress-induced cytotoxicity in lens epithelial cells. And it is important for multiple biological activities including drug resistance,cell differentiation,and oxidative stress response. As a novel cancer stem cell marker,ALDH1A1 can be used for tumors whose corresponding normal tissues express ALDH1A1 in relatively restricted or limited levels such as breast,lung,ovarian or colon cancer.

For Research Use Only