

# KCNK18 Polyclonal Antibody

Catalog Number:E-AB-18168



**Note:** Centrifuge before opening to ensure complete recovery of vial contents.

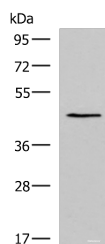
## Description

<b>Reactivity</b>	Human, Mouse
<b>Immunogen</b>	Synthetic peptide of human KCNK18
<b>Host</b>	Rabbit
<b>Isotype</b>	IgG
<b>Purification</b>	Antigen affinity purification
<b>Conjugation</b>	Unconjugated
<b>Formulation</b>	PBS with 0.05% NaN3 and 40% Glycerol,pH7.4

## Applications Recommended Dilution

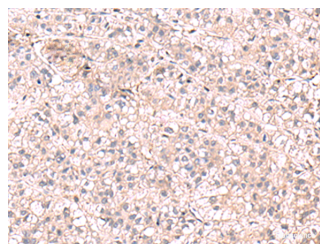
<b>WB</b>	1:500-1:2000
<b>IHC</b>	1:70-1:350
<b>ELISA</b>	1:5000-1:10000

## Data



Western blot analysis of TM4 cell lysate using KCNK18 Polyclonal Antibody at dilution of 1:800

**Observed Mw:Refer to figures**  
**Calculated Mw:44 kDa**



Immunohistochemistry of paraffin-embedded Human liver cancer tissue using KCNK18 Polyclonal Antibody at dilution of 1:75(×200)

## Preparation & Storage

**Storage** Store at -20°C. Avoid freeze / thaw cycles.

## Background

Potassium channels play a role in many cellular processes including maintenance of the action potential, muscle contraction, hormone secretion, osmotic regulation, and ion flow. This gene encodes a member of the superfamily of potassium channel proteins containing two pore-forming P domains and the encoded protein functions as an outward rectifying potassium channel. A mutation in this gene has been found to be associated with migraine with aura.

## For Research Use Only

A Reliable Research Partner in Life Science and Medicine

Toll-free: 1-888-852-8623

Web: [www.elabscience.com](http://www.elabscience.com)

Tel: 1-832-243-6086

Email: [techsupport@elabscience.com](mailto:techsupport@elabscience.com)

Fax: 1-832-243-6017