

ATRIP Polyclonal Antibody

Catalog Number:E-AB-18528

Note: Centrifuge before opening to ensure complete recovery of vial contents.

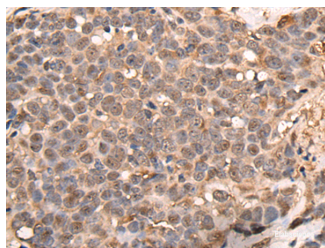
Description

Reactivity	Human, Mouse
Immunogen	Fusion protein of human ATRIP
Host	Rabbit
Isotype	IgG
Purification	Antigen affinity purification
Conjugation	Unconjugated
Formulation	PBS with 0.05% NaN ₃ and 40% Glycerol,pH7.4

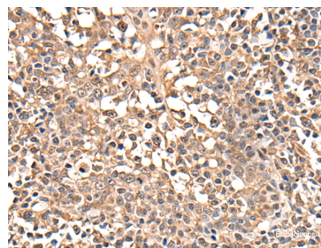
Applications Recommended Dilution

IHC	1:30-1:150
ELISA	1:5000-1:10000

Data



Immunohistochemistry of paraffin-embedded Human thyroid cancer tissue using ATRIP Polyclonal Antibody at dilution of 1:40(×200)



Immunohistochemistry of paraffin-embedded Human tonsil tissue using ATRIP Polyclonal Antibody at dilution of 1:40(×200)

Preparation & Storage

Storage Store at -20°C. Avoid freeze / thaw cycles.

Background

This gene encodes an essential component of the DNA damage checkpoint. The encoded protein binds to single-stranded DNA coated with replication protein A. The protein also interacts with the ataxia telangiectasia and Rad3 related protein kinase, resulting in its accumulation at intranuclear foci induced by DNA damage. Multiple transcript variants encoding different isoforms have been found for this gene.

For Research Use Only

A Reliable Research Partner in Life Science and Medicine

Toll-free: 1-888-852-8623

Web: www.elabscience.com

Tel: 1-832-243-6086

Email: techsupport@elabscience.com

Fax: 1-832-243-6017