

# HBE1 Polyclonal Antibody

Catalog Number:E-AB-18898



**Note:** Centrifuge before opening to ensure complete recovery of vial contents.

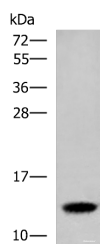
## Description

<b>Reactivity</b>	Human
<b>Immunogen</b>	Fusion protein of human HBE1
<b>Host</b>	Rabbit
<b>Isotype</b>	IgG
<b>Purification</b>	Antigen affinity purification
<b>Conjugation</b>	Unconjugated
<b>Formulation</b>	PBS with 0.05% NaN <sub>3</sub> and 40% Glycerol,pH7.4

## Applications Recommended Dilution

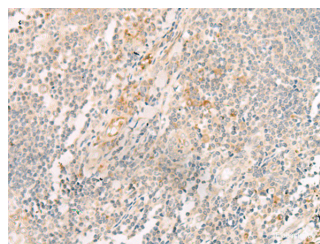
<b>WB</b>	1:500-1:2000
<b>IHC</b>	1:30-1:150
<b>ELISA</b>	1:5000-1:10000

## Data



Western blot analysis of Human placenta tissue lysate using HBE1 Polyclonal Antibody at dilution of 1:300

**Observed Mw:Refer to figures**  
**Calculated Mw:16 kDa**



Immunohistochemistry of paraffin-embedded Human tonsil tissue using HBE1 Polyclonal Antibody at dilution of 1:30(×200)

## Preparation & Storage

**Storage** Store at -20°C. Avoid freeze / thaw cycles.

## Background

The hemoglobin molecule is a tetramer consisting of two  $\alpha$ -globin-like polypeptide chains and two  $\beta$ -globin-like chains. The human hemoglobin genes are expressed in a tightly developmentally controlled fashion. $\epsilon$ -globin (HBE1) is the predominantly expressed gene during the embryonic stage. The epsilon hemoglobin chain seems to be the best marker for fetal nucleated red blood cells (NRBCs). Anti-HBE1 may be used to label and isolate fetal cells from maternal blood and can be useful in prenatal diagnosis. This antibody specifically recognizes the HBE1 and doesn't cross-react with other globin chains.

## For Research Use Only

A Reliable Research Partner in Life Science and Medicine

Toll-free: 1-888-852-8623

Web: [www.elabscience.com](http://www.elabscience.com)

Tel: 1-832-243-6086

Email: [techsupport@elabscience.com](mailto:techsupport@elabscience.com)

Fax: 1-832-243-6017