

CAMK2A Polyclonal Antibody

Catalog Number:E-AB-19660



Note: Centrifuge before opening to ensure complete recovery of vial contents.

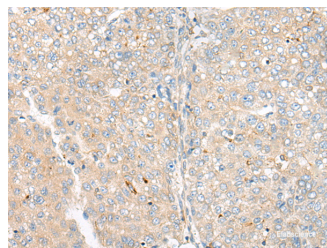
Description

Reactivity	Human, Mouse, Rat
Immunogen	Synthetic peptide of human CAMK2A
Host	Rabbit
Isotype	IgG
Purification	Antigen affinity purification
Conjugation	Unconjugated
Formulation	PBS with 0.05% NaN ₃ and 40% Glycerol,pH7.4

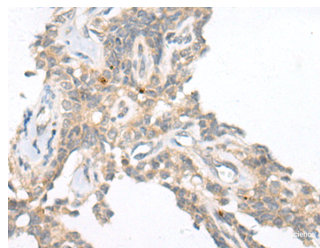
Applications Recommended Dilution

IHC	1:40-1:200
ELISA	1:5000-1:10000

Data



Immunohistochemistry of paraffin-embedded Human liver cancer tissue using CAMK2A Polyclonal Antibody at dilution of 1:55(×200)



Immunohistochemistry of paraffin-embedded Human ovarian cancer tissue using CAMK2A Polyclonal Antibody at dilution of 1:55(×200)

Preparation & Storage

Storage Store at -20°C. Avoid freeze / thaw cycles.

Background

The product of this gene belongs to the serine/threonine protein kinases family, and to the Ca(2+)/calmodulin-dependent protein kinases subfamily. Calcium signaling is crucial for several aspects of plasticity at glutamatergic synapses. This calcium calmodulin-dependent protein kinase is composed of four different chains: alpha, beta, gamma, and delta. The alpha chain encoded by this gene is required for hippocampal long-term potentiation (LTP) and spatial learning. In addition to its calcium-calmodulin (CaM)-dependent activity, this protein can undergo autophosphorylation, resulting in CaM-independent activity. Two transcript variants encoding distinct isoforms have been identified for this gene.

For Research Use Only

A Reliable Research Partner in Life Science and Medicine

Toll-free: 1-888-852-8623

Web: www.elabscience.com

Tel: 1-832-243-6086

Email: techsupport@elabscience.com

Fax: 1-832-243-6017