

FNBP1L Polyclonal Antibody

Catalog Number: E-AB-19876

1 Publications



Note: Centrifuge before opening to ensure complete recovery of vial contents.

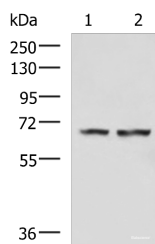
Description

Reactivity	Human, Mouse, Rat
Immunogen	Synthetic peptide of human FNBP1L
Host	Rabbit
Isotype	IgG
Purification	Antigen affinity purification
Conjugation	Unconjugated
Formulation	PBS with 0.05% NaN ₃ and 40% Glycerol, pH7.4

Applications Recommended Dilution

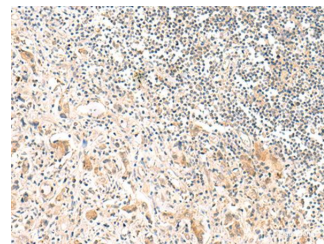
WB	1:500-1:2000
IHC	1:20-1:100
ELISA	1:5000-1:10000

Data

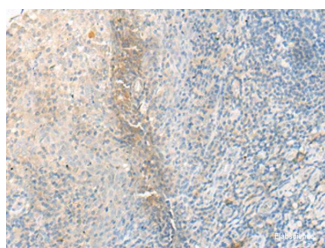


Western blot analysis of Human cerebella tissue
Human cerebrum tissue lysates using FNBP1L
Polyclonal Antibody at dilution of 1:750

Observed Mw: Refer to figures
Calculated Mw: 70 kDa



Immunohistochemistry of paraffin-embedded
Human prostate cancer tissue using FNBP1L
Polyclonal Antibody at dilution of 1:30 (x200)



Immunohistochemistry of paraffin-embedded
Human tonsil tissue using FNBP1L Polyclonal
Antibody at dilution of 1:30 (x200)

Preparation & Storage

Storage Store at -20°C. Avoid freeze / thaw cycles.

Background

For Research Use Only

A Reliable Research Partner in Life Science and Medicine

Toll-free: 1-888-852-8623

Web: www.elabscience.com

Tel: 1-832-243-6086

Email: techsupport@elabscience.com

Fax: 1-832-243-6017

FNBP1L Polyclonal Antibody

Catalog Number: E-AB-19876 1 Publications



The protein encoded by this gene binds to both CDC42 and N-WASP. This protein promotes CDC42-induced actin polymerization by activating the N-WASP-WIP complex and, therefore, is involved in a pathway that links cell surface signals to the actin cytoskeleton. Alternative splicing results in multiple transcript variants encoding different isoforms.

For Research Use Only

A Reliable Research Partner in Life Science and Medicine

Toll-free: 1-888-852-8623

Tel: 1-832-243-6086

Fax: 1-832-243-6017

Web: www.elabscience.com

Email: techsupport@elabscience.com