

MAPK8 Polyclonal Antibody

Catalog Number:E-AB-52157



Note: Centrifuge before opening to ensure complete recovery of vial contents.

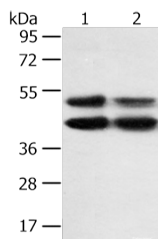
Description

| | |
|---------------------|--|
| Reactivity | Human, Mouse, Rat |
| Immunogen | Fusion protein of human MAPK8 |
| Host | Rabbit |
| Isotype | IgG |
| Purification | Antigen affinity purification |
| Conjugation | Unconjugated |
| Formulation | PBS with 0.05% NaN ₃ and 40% Glycerol,pH7.4 |

Applications Recommended Dilution

| | |
|--------------|----------------|
| WB | 1:1000-1:5000 |
| ELISA | 1:2000-1:10000 |

Data



Western blot analysis of K562 and hela cell using MAPK8 Polyclonal Antibody at dilution of 1:600

Observed Mw:Refer to figures
Calculated Mw:48 kDa

Preparation & Storage

Storage Store at -20°C. Avoid freeze / thaw cycles.

Background

MAPK8(Mitogen-activated protein kinase 8) is also named as JNK1,PRKM8,SAPK1,SAPK1C and belongs to the MAP kinase subfamily. MAPK8 is activated by dual phosphorylation at a Thr-Pro-Tyr motif during response to UV light. MAPK8 functions to phosphorylate c-Jun at N-terminal serine regulatory sites of Ser-63 and Ser-73,mapping within the transactivation domain. Phosphorylation of these sites in response to UV results in transcriptional activation of c-Jun. It has 4 isoforms produced by alternative splicing with the molecular weight of 46 kDa and 48 kDa. This protein can be phosphorylated and this antibody recognizes the 46 kDa and 55 kDa bands in western blot.

For Research Use Only

A Reliable Research Partner in Life Science and Medicine

Toll-free: 1-888-852-8623

Web: www.elabscience.com

Tel: 1-832-243-6086

Email: techsupport@elabscience.com

Fax: 1-832-243-6017