

# ARHGDIB Polyclonal Antibody

Catalog Number:E-AB-53461



**Note:** Centrifuge before opening to ensure complete recovery of vial contents.

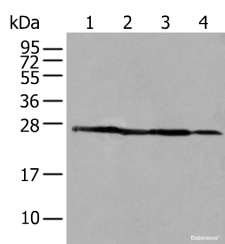
## Description

<b>Reactivity</b>	Human, Mouse
<b>Immunogen</b>	Synthetic peptide of human ARHGDIB
<b>Host</b>	Rabbit
<b>Isotype</b>	IgG
<b>Purification</b>	Antigen affinity purification
<b>Conjugation</b>	Unconjugated
<b>Formulation</b>	PBS with 0.05% NaN <sub>3</sub> and 40% Glycerol,pH7.4

## Applications Recommended Dilution

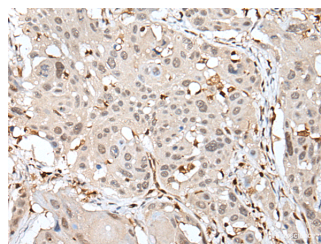
<b>WB</b>	1:500-1:2000
<b>IHC</b>	1:25-1:100
<b>ELISA</b>	1:5000-1:10000

## Data

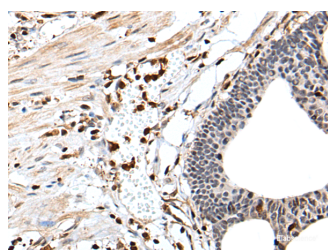


Western blot analysis of 293T A431 and HepG2 cell lysates using ARHGDIB Polyclonal Antibody at dilution of 1:500

**Observed Mw:Refer to figures**  
**Calculated Mw:23 kDa**



Immunohistochemistry of paraffin-embedded Human esophagus cancer tissue using ARHGDIB Polyclonal Antibody at dilution of 1:35(×200)



Immunohistochemistry of paraffin-embedded Human gastric cancer tissue using ARHGDIB Polyclonal Antibody at dilution of 1:35(×200)

## Preparation & Storage

**Storage** Store at -20°C. Avoid freeze / thaw cycles.

## Background

### For Research Use Only

A Reliable Research Partner in Life Science and Medicine

Toll-free: 1-888-852-8623

Web: [www.elabscience.com](http://www.elabscience.com)

Tel: 1-832-243-6086

Email: [techsupport@elabscience.com](mailto:techsupport@elabscience.com)

Fax: 1-832-243-6017

# ARHGDIB Polyclonal Antibody

Catalog Number:E-AB-53461



ARHGDIB,also known as RhoGDI2,is a conserved member of the RhoGDI family and plays an important role in cell migrations. It regulates the GDP/GTP exchange reaction of the Rho proteins by inhibiting the dissociation of GDP from them,and the subsequent binding of GTP to them. It is mainly in hematopoietic,endothelial,and epithelial cells. It has been linked to tumorigenesis and metastasis. RhoGDI2 expression is downregulated in several cancer types,such as bladder,lung and lymphoma,but is upregulated in prostate and gastric cancer.

---

## For Research Use Only

A Reliable Research Partner in Life Science and Medicine

Toll-free: 1-888-852-8623

Tel: 1-832-243-6086

Fax: 1-832-243-6017

Web: [www.elabscience.com](http://www.elabscience.com)

Email: [techsupport@elabscience.com](mailto:techsupport@elabscience.com)