

HSP27 Polyclonal Antibody

Catalog Number: E-AB-31748

1 Publications



Note: Centrifuge before opening to ensure complete recovery of vial contents.

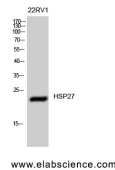
Description

Reactivity	Human, Mouse, Rat
Immunogen	Synthesized peptide derived from human HSP27 around the non-phosphorylation site of Ser15.
Host	Rabbit
Isotype	IgG
Purification	Affinity purification
Conjugation	Unconjugated
Formulation	PBS with 0.02% sodium azide, 0.5% protective protein and 50% glycerol, pH7.4

Applications Recommended Dilution

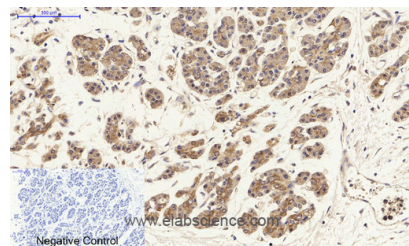
WB	1:500-1:2000
IHC	1:100-1:300
IF	1:50-1:200
ELISA	1:10000-1:20000

Data

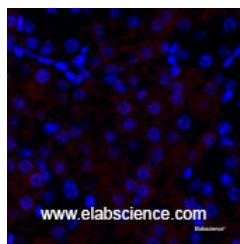


Western Blot analysis of 22RV1 cells using HSP27 Polyclonal Antibody at dilution of 1:1000.

Observed Mw: 27kDa
Calculated Mw: 23kDa



Immunohistochemistry of paraffin-embedded Human stomach cancer tissue using HSP27 Polyclonal Antibody at dilution of 1:200.



Immunofluorescence analysis of Mouse kidney tissue using HSP27 Polyclonal Antibody at dilution of 1:200.

Preparation & Storage

Storage Store at -20°C. Avoid freeze / thaw cycles.

For Research Use Only

A Reliable Research Partner in Life Science and Medicine

Toll-free: 1-888-852-8623

Web: www.elabscience.com

Tel: 1-832-243-6086

Email: techsupport@elabscience.com

Fax: 1-832-243-6017

HSP27 Polyclonal Antibody

Catalog Number: E-AB-31748

1 Publications



Background

Involved in stress resistance and actin organization.

For Research Use Only

A Reliable Research Partner in Life Science and Medicine

Toll-free: 1-888-852-8623

Tel: 1-832-243-6086

Fax: 1-832-243-6017

Web: www.elabscience.com

Email: techsupport@elabscience.com