

## RBM5 Polyclonal Antibody

**Catalog No.** E-AB-31949

*Note:* Centrifuge before opening to ensure complete recovery of vial contents.

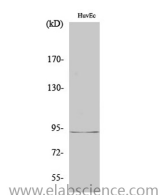
### Description

<b>Reactivity</b>	Human,Mouse
<b>Immunogen</b>	Synthesized peptide derived from the Internal region of human LUCA15
<b>Host</b>	Rabbit
<b>Isotype</b>	IgG
<b>Purification</b>	Affinity purification
<b>Buffer</b>	PBS with 0.02% sodium azide,0.5% protective protein and 50% glycerol pH 7.4.

### Applications Recommended Dilution

<b>WB</b>	1:500-1:2000
<b>IHC</b>	1:100-1:300
<b>ELISA</b>	1:10000

### Data



Western Blot analysis of HuvEc cells with RBM5  
Polyclonal Antibody  
**Observed Mw:92kDa**  
**Calculated Mw:92kDa**

### Preparation & Storage

**Storage** Store at -20°C. Avoid freeze / thaw cycles.

### Background

This gene is a candidate tumor suppressor gene which encodes a nuclear RNA binding protein that is a component of the spliceosome A complex. The encoded protein plays a role in the induction of cell cycle arrest and apoptosis through pre-mRNA splicing of multiple target genes including the tumor suppressor protein p53. This gene is located within the tumor suppressor region 3p21.3, and may play a role in the inhibition of tumor transformation and progression of several malignancies including lung cancer.

### For Research Use Only