

PTGES Polyclonal Antibody

Catalog No. E-AB-32563

Note: Centrifuge before opening to ensure complete recovery of vial contents.

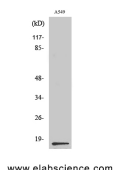
Description

| | |
|---------------------|--|
| Reactivity | Human,Mouse,Rat |
| Immunogen | Synthesized peptide derived from the Internal region of human PGE synthase. |
| Host | Rabbit |
| Isotype | IgG |
| Purification | Affinity purification |
| Conjugation | Unconjugated |
| Buffer | PBS with 0.02% sodium azide, 0.5% protective protein and 50% glycerol, pH7.4 |

Applications Recommended Dilution

| | |
|--------------|--------------|
| WB | 1:500-1:2000 |
| ELISA | 1:10000 |

Data



Western Blot analysis of A549 cells using PTGES
Polyclonal Antibody at dilution of 1:500.

Observed Mw:17kDa
Calculated Mw:17kDa

Preparation & Storage

Storage Store at -20°C. Avoid freeze / thaw cycles.

Background

The protein encoded by this gene is a glutathione-dependent prostaglandin E synthase. The expression of this gene has been shown to be induced by proinflammatory cytokine interleukin 1 beta (IL1B). Its expression can also be induced by tumor suppressor protein TP53, and may be involved in TP53 induced apoptosis. Knockout studies in mice suggest that this gene may contribute to the pathogenesis of collagen-induced arthritis and mediate acute pain during inflammatory responses. PTGES (Prostaglandin E Synthase) is a Protein Coding gene. Diseases associated with PTGES include Arthritis and Necrotizing Ulcerative Gingivitis. Among its related pathways are Ibuprofen Pathway, Pharmacodynamics and Arachidonic acid metabolism. GO annotations related to this gene include glutathione binding and prostaglandin-E synthase activity. An important paralog of this gene is MGST1.

For Research Use Only