

SIRT1 Polyclonal Antibody

Catalog Number: E-AB-32901

1 Publications



Note: Centrifuge before opening to ensure complete recovery of vial contents.

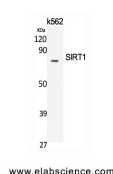
Description

Reactivity	Human, Mouse, Rat
Immunogen	Synthesized peptide derived from human SIRT1 around the non-phosphorylation site of Ser47.
Host	Rabbit
Isotype	IgG
Purification	Affinity purification
Conjugation	Unconjugated
Formulation	PBS with 0.02% sodium azide, 0.5% protective protein and 50% glycerol, pH7.4

Applications Recommended Dilution

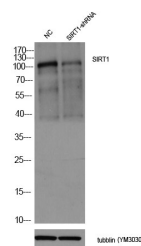
WB	1:500-1:2000
IHC	1:100-1:300
IF	1:50-1:200
ELISA	1:5000

Data

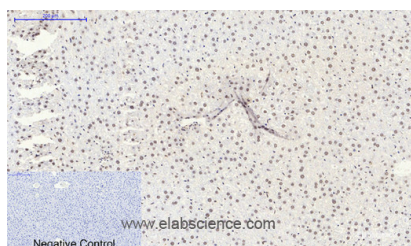


Western Blot analysis of K562 cells using SIRT1 Polyclonal Antibody at dilution of 1:2000.

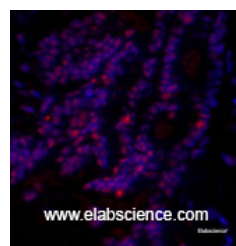
Observed Mw: 81kDa-120kDa
Calculated Mw: 82kDa



Western blot analysis of lysates from 1) Mouse Ovarian granulosa cell, 2) Mouse Ovarian granulosa cell knockdown by SIRT1-siRNA, primary antibody was diluted at 1:1000.



Immunohistochemistry of paraffin-embedded Rat liver tissue using SIRT1 Polyclonal Antibody at dilution of 1:200.



Immunofluorescence analysis of Rat lung tissue using SIRT1 Polyclonal Antibody at dilution of 1:200.

Preparation & Storage

Storage Store at -20°C. Avoid freeze / thaw cycles.

For Research Use Only

A Reliable Research Partner in Life Science and Medicine

Toll-free: 1-888-852-8623

Web: www.elabscience.com

Tel: 1-832-243-6086

Email: techsupport@elabscience.com

Fax: 1-832-243-6017

SIRT1 Polyclonal Antibody

Catalog Number: E-AB-32901

1 Publications



Background

This gene encodes a member of the sirtuin family of proteins, homologs to the yeast Sir2 protein. Members of the sirtuin family are characterized by a sirtuin core domain and grouped into four classes. The functions of human sirtuins have not yet been determined; however, yeast sirtuin proteins are known to regulate epigenetic gene silencing and suppress recombination of rDNA. Studies suggest that the human sirtuins may function as intracellular regulatory proteins with Human, Mouse and ADP-ribosyltransferase activity. The protein encoded by this gene is included in class I of the sirtuin family. Alternative splicing results in multiple transcript variants.

For Research Use Only

A Reliable Research Partner in Life Science and Medicine

Toll-free: 1-888-852-8623

Web: www.elabscience.com

Tel: 1-832-243-6086

Email: techsupport@elabscience.com

Fax: 1-832-243-6017