

CD66e Polyclonal Antibody

Catalog No. E-AB-10002

Note: Centrifuge before opening to ensure complete recovery of vial contents.

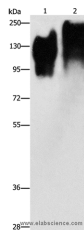
Description

Reactivity	Human
Immunogen	Recombinant protein of human CEACAM5
Host	Rabbit
Isotype	IgG
Purification	Affinity purification
Conjugation	Unconjugated
Buffer	PBS with 0.05% sodium azide, 50% glycerol, PH7.3

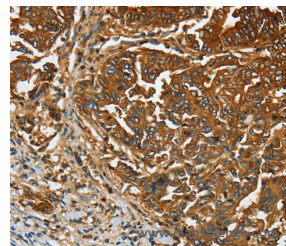
Applications Recommended Dilution

WB 1:500-1:2000,
IHC 1:25-1:100

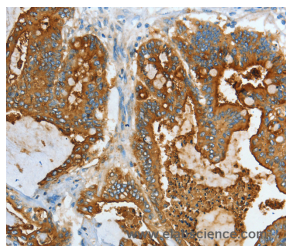
Data



Western Blot analysis of Human liver cancer and lung cancer tissue using CD66e Polyclonal Antibody at dilution of 1:350
Calculated Mw:77kDa



Immunohistochemistry of paraffin-embedded Human gastric cancer using CD66e Polyclonal Antibody at dilution of 1:20



Immunohistochemistry of paraffin-embedded Human colon cancer using CD66e Polyclonal Antibody at dilution of 1:20

Preparation & Storage

Storage Store at -20°C. Avoid freeze / thaw cycles.

For Research Use Only

Background

Carcinoembryonic antigen-related cell adhesion molecule 5 (CEACAM5) also known as CD66e (Cluster of Differentiation 66e), is a human gene. Members of the CEACAM subfamily, including CEACAM5, belong to the CEA gene family. CD66E is a well known tumor marker and a heavily glycosylated GPI-linked cell surface molecule.