

Note: Centrifuge before opening to ensure complete recovery of vial contents.

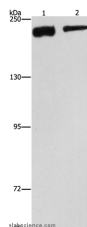
Description

Reactivity	Human,Mouse,Rat
Immunogen	Synthetic peptide of human CLTC
Host	Rabbit
Isotype	IgG
Purification	Affinity purification
Conjugation	Unconjugated
Formulation	PBS with 0.05% sodium azide and 50% glycerol, PH7.4

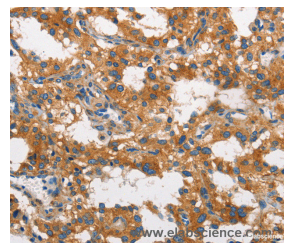
Applications Recommended Dilution

WB	1:200-1:1000
IHC	1:50-1:200

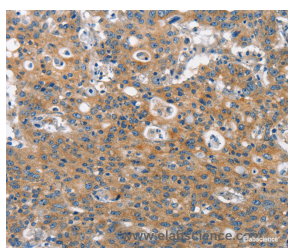
Data



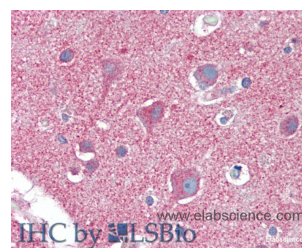
Western Blot analysis of NIH/3T3 and hela cell using CLTC Polyclonal Antibody at dilution of 1:300
Calculated Mw:192kDa



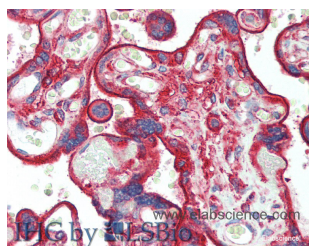
Immunohistochemistry of paraffin-embedded Human thyroid cancer using CLTC Polyclonal Antibody at dilution of 1:60



Immunohistochemistry of paraffin-embedded Human gastric cancer using CLTC Polyclonal Antibody at dilution of 1:60



Immunohistochemistry of paraffin-embedded Brain, Cortex tissue using CLTC Polyclonal Antibody at dilution of 1:60(Elabscience[®] Product Detected by Lifespan).



Immunohistochemistry of paraffin-embedded

For Research Use Only

A Reliable Research Partner in Life Science and Medicine

Toll-free: 1-888-852-8623

Web: www.elabscience.com

Tel: 1-832-243-6086

Email: techsupport@elabscience.com

Fax: 1-832-243-6017

CLTC Polyclonal Antibody

Catalog Number:E-AB-13153



Placenta tissue using CLTC Polyclonal Antibody at dilution of 1:60(Elabscience® Product Detected by Lifespan).

Preparation & Storage

Storage Store at -20°C. Avoid freeze / thaw cycles.

Background

Clathrin is a major protein component of the cytoplasmic face of intracellular organelles, called coated vesicles and coated pits. These specialized organelles are involved in the intracellular trafficking of receptors and endocytosis of a variety of macromolecules. The basic subunit of the clathrin coat is composed of three heavy chains and three light chains.

For Research Use Only

A Reliable Research Partner in Life Science and Medicine

Toll-free: 1-888-852-8623

Web: www.elabscience.com

Tel: 1-832-243-6086

Email: techsupport@elabscience.com

Fax: 1-832-243-6017