

GPC6 Polyclonal Antibody

Catalog Number:E-AB-13271

Note: Centrifuge before opening to ensure complete recovery of vial contents.

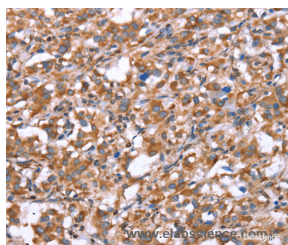
Description

Reactivity	Human,Mouse
Immunogen	Synthetic peptide of human GPC6
Host	Rabbit
Isotype	IgG
Purification	Affinity purification
Conjugation	Unconjugated
Formulation	PBS with 0.05% sodium azide and 50% glycerol, PH7.4

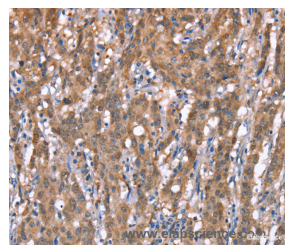
Applications Recommended Dilution

IHC	1:50-1:200
------------	------------

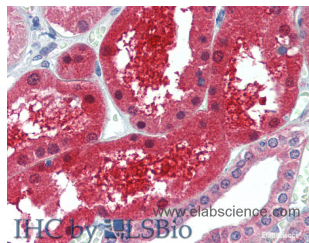
Data



Immunohistochemistry of paraffin-embedded Human thyroid cancer tissue using GPC6 Polyclonal Antibody at dilution 1:40



Immunohistochemistry of paraffin-embedded Human gastric cancer tissue using GPC6 Polyclonal Antibody at dilution 1:40



Immunohistochemistry of paraffin-embedded Kidney tissue using GPC6 Polyclonal Antibody at dilution of 1:100(Elabscience® Product Detected by Lifespan).

Preparation & Storage

Storage Store at -20°C. Avoid freeze / thaw cycles.

Background

The glypicans comprise a family of glycosylphosphatidylinositol-anchored heparan sulfate proteoglycans, and they have been implicated in the control of cell growth and cell division. The glypican encoded by this gene is a putative cell surface coreceptor for growth factors, extracellular matrix proteins, proteases and anti-proteases.

For Research Use Only

A Reliable Research Partner in Life Science and Medicine

Toll-free: 1-888-852-8623

Web: www.elabscience.com

Tel: 1-832-243-6086

Email: techsupport@elabscience.com

Fax: 1-832-243-6017