

SLC34A2 Polyclonal Antibody

Catalog Number:E-AB-15851



Note: Centrifuge before opening to ensure complete recovery of vial contents.

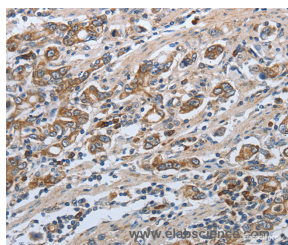
Description

Reactivity	Human
Immunogen	Synthetic peptide of human SLC34A2
Host	Rabbit
Isotype	IgG
Purification	Affinity purification
Conjugation	Unconjugated
Formulation	PBS with 0.05% sodium azide and 50% glycerol, PH7.4

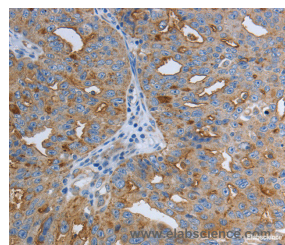
Applications Recommended Dilution

IHC	1:50-1:200
------------	------------

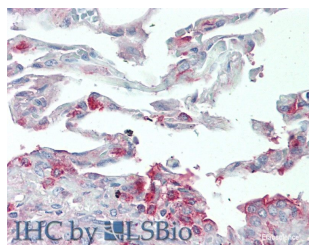
Data



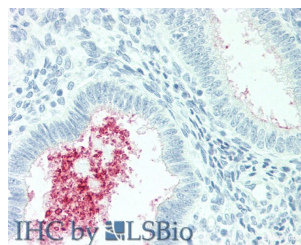
Immunohistochemistry of paraffin-embedded Human gastric cancer tissue using SLC34A2 Polyclonal Antibody at dilution of 1:50



Immunohistochemistry of paraffin-embedded Human ovarian cancer using SLC34A2 Polyclonal Antibody at dilution of 1:50



Immunohistochemistry of paraffin-embedded Human Lung tissue using SLC34A2 Polyclonal Antibody at dilution of 1:60(Elabscience® Product Detected by Lifespan).



Immunohistochemistry of paraffin-embedded Human Uterus tissue using SLC34A2 Polyclonal Antibody at dilution of 1:60(Elabscience® Product Detected by Lifespan).

Preparation & Storage

Storage Store at -20°C. Avoid freeze / thaw cycles.

Background

The protein encoded by this gene is a pH-sensitive sodium-dependent phosphate transporter. Phosphate uptake is increased at lower pH. Defects in this gene are a cause of pulmonary alveolar microlithiasis. Three transcript variants encoding two different isoforms have been found for this gene.

For Research Use Only

A Reliable Research Partner in Life Science and Medicine

Toll-free: 1-888-852-8623

Web: www.elabscience.com

Tel: 1-832-243-6086

Email: techsupport@elabscience.com

Fax: 1-832-243-6017