

# DIRAS1 Polyclonal Antibody

Catalog Number:E-AB-16393

**Note:** Centrifuge before opening to ensure complete recovery of vial contents.

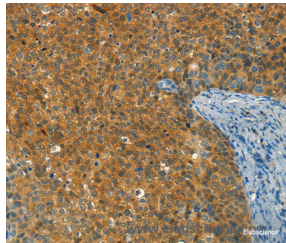
## Description

<b>Reactivity</b>	Human
<b>Immunogen</b>	Synthetic peptide of human DIRAS1
<b>Host</b>	Rabbit
<b>Isotype</b>	IgG
<b>Purification</b>	Affinity purification
<b>Conjugation</b>	Unconjugated
<b>Formulation</b>	PBS with 0.05% sodium azide and 50% glycerol, PH7.4

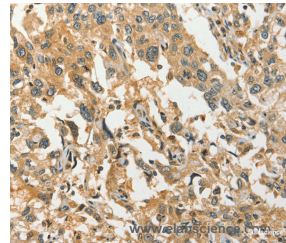
## Applications Recommended Dilution

<b>IHC</b>	1:50-1:200
------------	------------

## Data



Immunohistochemistry of paraffin-embedded Human cervical cancer tissue using DIRAS1 Polyclonal Antibody at dilution 1:30



Immunohistochemistry of paraffin-embedded Human esophagus cancer tissue using DIRAS1 Polyclonal Antibody at dilution 1:30

## Preparation & Storage

**Storage** Store at -20°C. Avoid freeze / thaw cycles.

## Background

DIRAS1 (DIRAS family, GTP-binding Ras-like 1), also known as distinct subgroup of the Ras family member 1, RIG (Ras-related inhibitor of cell growth), small GTP-binding tumor suppressor 1 or GBTS1, is a 198 amino acid cell membrane protein expressed at high levels in brain and heart. DIRAS1 displays low GTPase activity and is encoded by a gene that maps to human chromosome 19p13.3.

## For Research Use Only

A Reliable Research Partner in Life Science and Medicine

Toll-free: 1-888-852-8623

Web: [www.elabscience.com](http://www.elabscience.com)

Tel: 1-832-243-6086

Email: [techsupport@elabscience.com](mailto:techsupport@elabscience.com)

Fax: 1-832-243-6017