

GPC6 Polyclonal Antibody

Catalog Number:E-AB-16462

Note: Centrifuge before opening to ensure complete recovery of vial contents.

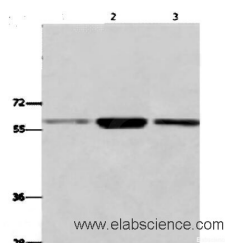
Description

Reactivity	Human,Mouse
Immunogen	Synthetic peptide of human GPC6
Host	Rabbit
Isotype	IgG
Purification	Affinity purification
Conjugation	Unconjugated
Formulation	PBS with 0.05% sodium azide and 50% glycerol, PH7.4

Applications Recommended Dilution

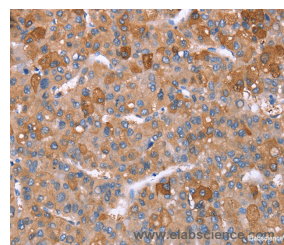
WB	1:500-1:2000
IHC	1:50-1:200

Data

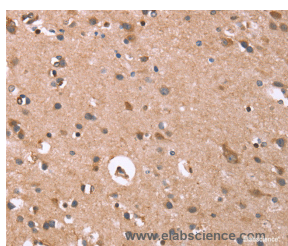


Western Blot analysis of K562,231, Human fetal liver tissue using GPC6 Polyclonal Antibody at dilution of 1:700

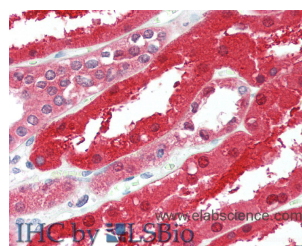
Calculated Mw:63kDa



Immunohistochemistry of paraffin-embedded Human liver cancer tissue using GPC6 Polyclonal Antibody at dilution 1:40



Immunohistochemistry of paraffin-embedded Human brain tissue using GPC6 Polyclonal Antibody at dilution 1:40



Immunohistochemistry of paraffin-embedded Kidney tissue using GPC6 Polyclonal Antibody at dilution of 1:90 (Elabscience® Product Detected by Lifespan).

Preparation & Storage

Storage Store at -20°C. Avoid freeze / thaw cycles.

Background

The glypicans comprise a family of glycosylphosphatidylinositol-anchored heparan sulfate proteoglycans, and they have been implicated in the control of cell growth and cell division. The glypican encoded by this gene is a putative cell surface

For Research Use Only

A Reliable Research Partner in Life Science and Medicine

Toll-free: 1-888-852-8623

Web: www.elabscience.com

Tel: 1-832-243-6086

Email: techsupport@elabscience.com

Fax: 1-832-243-6017

GPC6 Polyclonal Antibody

Catalog Number: E-AB-16462



coreceptor for growth factors, extracellular matrix proteins, proteases and anti-proteases.

For Research Use Only

A Reliable Research Partner in Life Science and Medicine

Toll-free: 1-888-852-8623

Tel: 1-832-243-6086

Fax: 1-832-243-6017

Web: www.elabscience.com

Email: techsupport@elabscience.com