

Recombinant Human TMED1 Protein (His Tag)

Catalog Number:PKSH030660



Note: Centrifuge before opening to ensure complete recovery of vial contents.

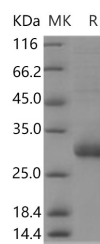
Description

Synonyms	IL1r11;IL1RL1LG;Tp24
Species	Human
Expression Host	HEK293 Cells
Sequence	Met 1-Asn194
Accession	Q13445
Calculated Molecular Weight	20.6 kDa
Observed molecular weight	28 kDa
Tag	C-His
Bioactivity	Measured by its binding ability in a functional ELISA. 2. Immobilized human TMED1-His at 10µg/mL (100µL/well) can bind human IL1R4-Fc, the EC50 of human IL1R4-Fc is 8-50ng/mL.

Properties

Purity	> 90 % as determined by reducing SDS-PAGE.
Endotoxin	< 1.0 EU per µg of the protein as determined by the LAL method.
Storage	Generally, lyophilized proteins are stable for up to 12 months when stored at -20 to -80°C. Reconstituted protein solution can be stored at 4-8°C for 2-7 days. Aliquots of reconstituted samples are stable at < -20°C for 3 months.
Shipping	This product is provided as lyophilized powder which is shipped with ice packs.
Formulation	Lyophilized from sterile PBS, pH 7.4 Normally 5 % - 8 % trehalose, mannitol and 0.01 % Tween80 are added as protectants before lyophilization. Please refer to the specific buffer information in the printed manual.
Reconstitution	Please refer to the printed manual for detailed information.

Data



> 90 % as determined by reducing SDS-PAGE.

Background

TMED1 belongs to the EMP24/GP25L family. It contains 1 GOLD domain and is widely expressed. TMED1 binds to its receptor IL1RL1 and results in the activation of DNA binding by nuclear factor NF-kappa-B or transcription from the IL8 promoter and most likely requires other proteins to elicit these activities. Dendritic cells from Peyer's patches (but not from spleen) express TMED1 in response to treatment with LPS. TMED1 may play a role in vesicular protein trafficking; mainly in the early secretory pathway. It may act as a cargo receptor at the luminal side for incorporation of secretory

For Research Use Only

A Reliable Research Partner in Life Science and Medicine

Toll-free: 1-888-852-8623

Web: www.elabscience.com

Tel: 1-832-243-6086

Email: techsupport@elabscience.com

Fax: 1-832-243-6017

Recombinant Human TMED1 Protein (His Tag)

Catalog Number:PKSH030660



cargo molecules into transport vesicles and may be involved in vesicle coat formation at the cytoplasmic side.

For Research Use Only

A Reliable Research Partner in Life Science and Medicine

Toll-free: 1-888-852-8623

Tel: 1-832-243-6086

Fax: 1-832-243-6017

Web: www.elabscience.com

Email: techsupport@elabscience.com