

Recombinant Human LRPAP1/A2MRAP Protein (His Tag)

Catalog Number:PKSH031256

DIA • AN[®]
by Elabscience

Note: Centrifuge before opening to ensure complete recovery of vial contents.

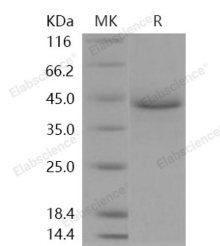
Description

Synonyms	A2MRAP;A2RAP;alpha-2-MRAP;HBP44;MRAP;MYP23;RAP
Species	Human
Expression Host	HEK293 Cells
Sequence	Tyr 35-Leu 357
Accession	NP_002328.1
Calculated Molecular Weight	39.2 kDa
Observed molecular weight	43 kDa
Tag	C-His
Bioactivity	Immobilized human LRPAP1 at 0.5 µg/ml can bind human VLDLR with a range of 3. 2-400 ng/ml.

Properties

Purity	> 92 % as determined by reducing SDS-PAGE.
Endotoxin	< 1.0 EU per µg of the protein as determined by the LAL method.
Storage	Generally, lyophilized proteins are stable for up to 12 months when stored at -20 to -80°C. Reconstituted protein solution can be stored at 4-8°C for 2-7 days. Aliquots of reconstituted samples are stable at < -20°C for 3 months.
Shipping	This product is provided as lyophilized powder which is shipped with ice packs.
Formulation	Lyophilized from sterile PBS, pH 7.4 Normally 5 % - 8 % trehalose, mannitol and 0.01% Tween80 are added as protectants before lyophilization. Please refer to the specific buffer information in the printed manual.
Reconstitution	Please refer to the printed manual for detailed information.

Data



> 92 % as determined by reducing SDS-PAGE.

Background

Receptor-associated protein (RAP) is a molecular chaperone for low density lipoprotein receptor-related protein (LRP), which plays a key role in cholesterol metabolism. The lipoprotein receptor-related protein (LRP) is an endocytic receptor for several ligands, such as alpha2-macroglobulin (alpha2 M) and apolipoprotein E. LRP is involved in the clearance of lipids from the bloodstream and is expressed in the atherosclerotic plaque. The LRP-associated protein (LRPAP in humans, RAP in mice) acts as a chaperone protein, stabilizing the nascent LRP peptide in the endoplasmic reticulum and Golgi complex. Alpha-2-macroglobulin receptor-associated protein, also known as low density lipoprotein receptor-

For Research Use Only

A Reliable Research Partner in Life Science and Medicine

Toll-free: 1-888-852-8623

Web: www.elabscience.com

Tel: 1-832-243-6086

Email: techsupport@elabscience.com

Fax: 1-832-243-6017

Recombinant Human LRPAP1/A2MRAP Protein (His Tag)

DIA • AN®
by Elabscience

Catalog Number:PKSH031256

related protein-associated protein 1, RAP and LRPAP1, is a 39 kDa protein and a member of the alpha-2-MRAP family. It is a receptor antagonist that interacts with several members of the low density lipoprotein (LDL) receptor gene family. Upon binding to these receptors, LRPAP1 inhibits all ligand interactions with the receptors. LRPAP1 is present on cell surface forming a complex with the alpha-2-macroglobulin receptor heavy and light chains. It binds with LRP1B and the binding is followed by internalization and degradation. LRPAP1 interacts with LRP1/alpha-2-macroglobulin receptor and LRP2, and may be involved in the pathogenesis of membrane glomerular nephritis. LRPAP1 together with LRP2 forms the Heymann nephritis antigenic complex. LRP2 is expressed in epithelial cells of the thyroid, where it can serve as a receptor for the protein thyroglobulin.

For Research Use Only

A Reliable Research Partner in Life Science and Medicine

Toll-free: 1-888-852-8623

Tel: 1-832-243-6086

Fax: 1-832-243-6017

Web: www.elabscience.com

Email: techsupport@elabscience.com