

Note: Centrifuge before opening to ensure complete recovery of vial contents.

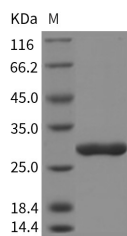
Description

| | |
|------------------------------------|--------------|
| Synonyms | CTRB1 |
| Species | Rat |
| Expression Host | HEK293 Cells |
| Sequence | Met1-Asn263 |
| Accession | P17538 |
| Calculated Molecular Weight | 27.4 kDa |
| Tag | C-His |

Properties

| | |
|-----------------------|---|
| Purity | > 95 % as determined by reducing SDS-PAGE. |
| Endotoxin | < 1.0 EU per μg of the protein as determined by the LAL method. |
| Storage | Generally, lyophilized proteins are stable for up to 12 months when stored at -20 to -80°C. Reconstituted protein solution can be stored at 4-8°C for 2-7 days. Aliquots of reconstituted samples are stable at < -20°C for 3 months. |
| Shipping | This product is provided as lyophilized powder which is shipped with ice packs. |
| Formulation | Lyophilized from sterile PBS, pH 7.4 Normally 5 % - 8 % trehalose, mannitol and 0.01% Tween80 are added as protectants before lyophilization. Please refer to the specific buffer information in the printed manual. |
| Reconstitution | Please refer to the printed manual for detailed information. |

Data



> 95 % as determined by reducing SDS-PAGE.

Background

Chymotrypsinogen B (CTRB1) is a 263 amino acid protein with signal peptide (1-18) and Chymotrypsinogen B (19-263). Chymotrypsinogen B have three chains:Chymotrypsin B chain A(19-31), Chymotrypsin B chain B(34-164), Chymotrypsin B chain C (167-263). Chymotrypsinogen B is a Serine Protease Hydrolase secretes into gastrointestinal tract as the inactive precursor Chymotrypsinogen.

For Research Use Only

A Reliable Research Partner in Life Science and Medicine

Toll-free: 1-888-852-8623

Web: www.elabscience.com

Tel: 1-832-243-6086

Email: techsupport@elabscience.com

Fax: 1-832-243-6017