

# Recombinant Mouse CD6/TP120 Protein (His Tag)

Catalog Number:PKSM040529



**Note:** Centrifuge before opening to ensure complete recovery of vial contents.

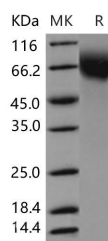
## Description

<b>Synonyms</b>	CD6 antigen;Cd6
<b>Species</b>	Mouse
<b>Expression Host</b>	HEK293 Cells
<b>Sequence</b>	Met 1-Gly396
<b>Accession</b>	Q91WN5
<b>Calculated Molecular Weight</b>	42.6 kDa
<b>Observed molecular weight</b>	60-70 kDa
<b>Tag</b>	C-His
<b>Bioactivity</b>	Measured by the ability of the immobilized protein to support the adhesion of Jurkat human acute T cell leukemia cells. When $8 \times 10^4$ cells/well are added to mCD6-His coated plates (5µg/mL, 100 µL/well), approximately more than 15% of cells will adhere after 60 minutes at 37°C.

## Properties

<b>Purity</b>	> 90 % as determined by reducing SDS-PAGE.
<b>Endotoxin</b>	< 1.0 EU per µg of the protein as determined by the LAL method.
<b>Storage</b>	Generally, lyophilized proteins are stable for up to 12 months when stored at -20 to -80°C. Reconstituted protein solution can be stored at 4-8°C for 2-7 days. Aliquots of reconstituted samples are stable at < -20°C for 3 months.
<b>Shipping</b>	This product is provided as lyophilized powder which is shipped with ice packs.
<b>Formulation</b>	Lyophilized from sterile PBS, pH 7.4 Normally 5 % - 8 % trehalose, mannitol and 0.01 % Tween80 are added as protectants before lyophilization. Please refer to the specific buffer information in the printed manual.
<b>Reconstitution</b>	Please refer to the printed manual for detailed information.

## Data



> 90 % as determined by reducing SDS-PAGE.

## Background

T-cell differentiation antigen CD6, also known as TP120 and CD6, is a single-pass type I membrane protein which contains three SRCR domains. CD6 / TP120 is a cell surface glycoprotein expressed primarily on T cells, it may function as a costimulatory molecule and may play a role in autoreactive immune responses. CD6 / TP120 is expressed by thymocytes, mature T-cells, a subset of B-cells known as B-1 cells, and by some cells in the brain. CD6 ligand termed

## For Research Use Only

A Reliable Research Partner in Life Science and Medicine

Toll-free: 1-888-852-8623

Web: [www.elabscience.com](http://www.elabscience.com)

Tel: 1-832-243-6086

Email: [techsupport@elabscience.com](mailto:techsupport@elabscience.com)

Fax: 1-832-243-6017

# Recombinant Mouse CD6/TP120 Protein (His Tag)

Catalog Number:PKSM040529



CD166 (previously known as activated leukocyte cell adhesion molecule, ALCAM ) has been identified and shown to be expressed on activated T cells, B cells, thymic epithelium, keratinocytes, and in rheumatoid arthritis synovial tissue. CD6 / TP120 binds to activated leukocyte cell adhesion molecule ( CD166 ), and is considered as a costimulatory molecule involved in lymphocyte activation and thymocyte development. CD6 / TP120 partially associates with the TCR / CD3 complex and colocalizes with it at the center of the mature immunological synapse (IS) on T lymphocytes. During thymic development CD6-dependent signals may contribute both to thymocyte survival, and to the overall functional avidity of selection in both man and mouse.

---

## For Research Use Only

A Reliable Research Partner in Life Science and Medicine

Toll-free: 1-888-852-8623

Web: [www.elabscience.com](http://www.elabscience.com)

Tel: 1-832-243-6086

Email: [techsupport@elabscience.com](mailto:techsupport@elabscience.com)

Fax: 1-832-243-6017