

# Recombinant Mouse LYPD3 Protein (His Tag)

Catalog Number:PKSM040620



**Note:** Centrifuge before opening to ensure complete recovery of vial contents.

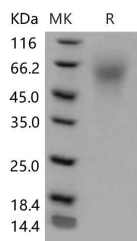
## Description

|                                    |  |
|------------------------------------|--|
| <b>Synonyms</b>                    | 2310061G07Rik;C4.4a  |
| <b>Species</b>                     | Mouse  |
| <b>Expression Host</b>             | HEK293 Cells   |
| <b>Sequence</b>                    | Met 1-His 287  |
| <b>Accession</b>                   | NP_598504.1  |
| <b>Calculated Molecular Weight</b> | 28.0 kDa   |
| <b>Observed molecular weight</b>   | 55-60 kDa  |
| <b>Tag</b>                         | C-His  |
| <b>Bioactivity</b>                 | Measured by its ability to bind recombinant human Galectin3 in a functional ELISA. |

## Properties

|                       |   |
|-----------------------|---|
| <b>Purity</b>         | > 92 % as determined by reducing SDS-PAGE.  |
| <b>Endotoxin</b>      | < 1.0 EU per µg of the protein as determined by the LAL method.   |
| <b>Storage</b>        | Generally, lyophilized proteins are stable for up to 12 months when stored at -20 to -80°C. Reconstituted protein solution can be stored at 4-8°C for 2-7 days. Aliquots of reconstituted samples are stable at < -20°C for 3 months. |
| <b>Shipping</b>       | This product is provided as lyophilized powder which is shipped with ice packs.   |
| <b>Formulation</b>    | Lyophilized from sterile PBS, pH 7.4<br>Normally 5 % - 8 % trehalose, mannitol and 0.01% Tween80 are added as protectants before lyophilization.<br>Please refer to the specific buffer information in the printed manual.            |
| <b>Reconstitution</b> | Please refer to the printed manual for detailed information.  |

## Data



> 92 % as determined by reducing SDS-PAGE.

## Background

Ly6 / PLAUR domain-containing protein 3, also known as GPI-anchored metastasis-associated protein C4.4A homolog, Matrigel-induced gene C4 protein, MIG-C4 and LYPD3, is a cell membrane protein which contains twoUPAR/Ly6 domains. Human LYPD3 contains twoUPAR/Ly6 domains. LYPD3 is expressed in placenta, skin and urothelium. It is found in suprabasal keratinocytes of chronic wounds. Weak expression of LYPD3 is found in esophagus and peripheral blood mononuclear cells. It is found in the majority of primary and metastatic transitional cell carcinomas (TCCs) and as well in breast cancer tissues, but not in adjacent normal tissues. High expression of LYPD3 is found in the tumor

## For Research Use Only

A Reliable Research Partner in Life Science and Medicine

Toll-free: 1-888-852-8623

Web: [www.elabscience.com](http://www.elabscience.com)

Tel: 1-832-243-6086

Email: [techsupport@elabscience.com](mailto:techsupport@elabscience.com)

Fax: 1-832-243-6017

# Recombinant Mouse LYPD3 Protein (His Tag)

Catalog Number:PKSM040620



component of some noninvasive superficial lesions and in invasive and metastatic urothelial cancers. LYPD3 is up-regulated in migrating keratinocytes during epithelisation of incisional skin wounds. LYPD3 supports cell migration. It may be involved in urothelial cell-matrix interactions. It may also be involved in tumor progression

---

## For Research Use Only

A Reliable Research Partner in Life Science and Medicine

Toll-free: 1-888-852-8623

Tel: 1-832-243-6086

Fax: 1-832-243-6017

Web: [www.elabscience.com](http://www.elabscience.com)

Email: [techsupport@elabscience.com](mailto:techsupport@elabscience.com)