

# Recombinant Mouse ECM1 Protein (His Tag)

Catalog Number:PKSM040729



**Note:** Centrifuge before opening to ensure complete recovery of vial contents.

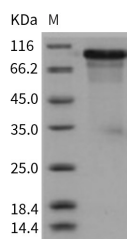
## Description

<b>Synonyms</b>	AI663821;p85
<b>Species</b>	Mouse
<b>Expression Host</b>	HEK293 Cells
<b>Sequence</b>	Met 1-Glu 559
<b>Accession</b>	Q61508-1
<b>Calculated Molecular Weight</b>	62.5 kDa
<b>Observed molecular weight</b>	90-95 kDa
<b>Tag</b>	C-His
<b>Bioactivity</b>	Measured by its ability to bind human MMP-9 in a functional ELISA.

## Properties

<b>Purity</b>	> 88 % as determined by reducing SDS-PAGE.
<b>Endotoxin</b>	< 1.0 EU per µg of the protein as determined by the LAL method.
<b>Storage</b>	Generally, lyophilized proteins are stable for up to 12 months when stored at -20 to -80°C. Reconstituted protein solution can be stored at 4-8°C for 2-7 days. Aliquots of reconstituted samples are stable at < -20°C for 3 months.
<b>Shipping</b>	This product is provided as lyophilized powder which is shipped with ice packs.
<b>Formulation</b>	Lyophilized from sterile PBS, pH 7.4 Normally 5 % - 8 % trehalose, mannitol and 0.01% Tween80 are added as protectants before lyophilization. Please refer to the specific buffer information in the printed manual.
<b>Reconstitution</b>	Please refer to the printed manual for detailed information.

## Data



> 88 % as determined by reducing SDS-PAGE.

## Background

Extracellular matrix protein 1 (ECM1) is a secreted glycoprotein and playing a pivotal role in endochondral bone formation, angiogenesis, and tumour biology. Three splice variants have been identified: ECM1a (540 aa) is most widely expressed, with highest expression in the placenta and heart; ECM1b (415 aa) is differentiation-dependent expressed and found only in tonsil and associated with suprabasal keratinocytes; ECM1c (559 aa) accounts for approximately 15% of skin ECM1. Although ECM1 is not tumor specific, is significantly elevated in many malignant epithelial tumors and is suggested as a possible trigger for angiogenesis, tumor progression and malignancies. It also has been shown to regulate endochondral bone formation, skeletal development and tissue remodeling.

## For Research Use Only

A Reliable Research Partner in Life Science and Medicine

Toll-free: 1-888-852-8623

Web: [www.elabscience.com](http://www.elabscience.com)

Tel: 1-832-243-6086

Email: [techsupport@elabscience.com](mailto:techsupport@elabscience.com)

Fax: 1-832-243-6017