

Recombinant Mouse CNDP2/CPGL/PEPA Protein (His Tag)

Catalog Number:PKSM040782

Note: Centrifuge before opening to ensure complete recovery of vial contents.

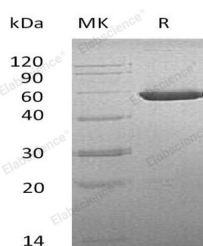
Description

| | |
|------------------------------------|---|
| Synonyms | CNDP2;CNDP dipeptidase 2;Cytosolic non-specific dipeptidase;Glutamate carboxypeptidase-like protein 1;Dip-2;Pep-1;Pep1 |
| Species | Mouse |
| Expression Host | Baculovirus-Insect Cells |
| Sequence | Met 1-Asn 475 |
| Accession | NP_075638.2 |
| Calculated Molecular Weight | 54.0 kDa |
| Tag | C-His |
| Bioactivity | Measured by its ability to cleave carnosine (β -Ala-His) in a two step assay (mouse CNDP2 concentration 10 μ g/ml). The specific activity is > 40 pmoles/min/ μ g. |

Properties

| | |
|-----------------------|---|
| Purity | > 97 % as determined by reducing SDS-PAGE. |
| Endotoxin | < 1.0 EU per μ g of the protein as determined by the LAL method. |
| Storage | Generally, lyophilized proteins are stable for up to 12 months when stored at -20 to -80°C. Reconstituted protein solution can be stored at 4-8°C for 2-7 days. Aliquots of reconstituted samples are stable at < -20°C for 3 months. |
| Shipping | This product is provided as lyophilized powder which is shipped with ice packs. |
| Formulation | Lyophilized from sterile 50mM Tris, 100mM NaCl, 0.5mM PMSF, 10% glycerol, pH 8.5 Normally 5 % - 8 % trehalose, mannitol and 0.01% Tween80 are added as protectants before lyophilization. Please refer to the specific buffer information in the printe |
| Reconstitution | Please refer to the printed manual for detailed information. |

Data



> 97 % as determined by reducing SDS-PAGE.

Background

Cytosolic non-specific dipeptidase, also known as CNDP dipeptidase 2, Glutamate carboxypeptidase-like protein 1, Peptidase A, CNDP2 and CN2, is a cytoplasm protein which belongs to the peptidase M20A family. CNDP2 / CPGL is a cytosolic enzyme that can hydrolyze carnosine to yield L-histidine and beta-alanine. CNDP2 / CPGL hydrolyzes a variety of dipeptides including L-carnosine but has a strong preference for Cys-Gly. It may play a role as tumor suppressor in hepatocellular carcinoma (HCC) cells. Isoform 1 of CNDP2 / CPGL is ubiquitously expressed with higher levels in kidney

For Research Use Only

A Reliable Research Partner in Life Science and Medicine

Toll-free: 1-888-852-8623

Web: www.elabscience.com

Tel: 1-832-243-6086

Email: techsupport@elabscience.com

Fax: 1-832-243-6017

Recombinant Mouse CNDP2/CPGL/PEPA Protein (His Tag)



Catalog Number:PKSM040782

and liver (at protein level). Isoform2 of CNDP2 / CPGL is expressed in fetal tissues, it is only expressed in adult liver and placental tissues. CNDP2 / CPGL is highly expressed in the histaminergic neurons in the tuberomammillary nucleus, implying that it may supply histidine to histaminergic neurons for histamine synthesis.

For Research Use Only

A Reliable Research Partner in Life Science and Medicine

Toll-free: 1-888-852-8623

Tel: 1-832-243-6086

Fax: 1-832-243-6017

Web: www.elabscience.com

Email: techsupport@elabscience.com