

Recombinant Mouse Serpin F1/PEDF Protein (His Tag)

Catalog Number:PKSM040786



Note: Centrifuge before opening to ensure complete recovery of vial contents.

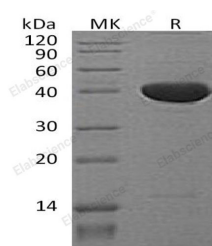
Description

| | |
|------------------------------------|---|
| Synonyms | AI195227 Protein;Mouse;EPC-1 Protein;Mouse;Pedf Protein;Mouse;Pedfl Protein;Mouse;Sdf3 Protein;Mouse |
| Species | Mouse |
| Expression Host | HEK293 Cells |
| Sequence | Met 1-Thr 417 |
| Accession | NP_035470.3 |
| Calculated Molecular Weight | 45.8 kDa |
| Observed molecular weight | 60-65 kDa |
| Tag | C-His |
| Bioactivity | Immobilized mouse SERPINF1-His at 10 µg/ml (100 µl/well) can bind biotinylated human GST-CSNK2A1 with a linear range of 0.31-2.5 µg/ml. |

Properties

| | |
|-----------------------|---|
| Purity | > 95 % as determined by reducing SDS-PAGE. |
| Endotoxin | < 1.0 EU per µg of the protein as determined by the LAL method. |
| Storage | Generally, lyophilized proteins are stable for up to 12 months when stored at -20 to -80°C. Reconstituted protein solution can be stored at 4-8°C for 2-7 days. Aliquots of reconstituted samples are stable at < -20°C for 3 months. |
| Shipping | This product is provided as lyophilized powder which is shipped with ice packs. |
| Formulation | Lyophilized from sterile PBS, pH 7.4 Normally 5 % - 8 % trehalose, mannitol and 0.01 % Tween80 are added as protectants before lyophilization. Please refer to the specific buffer information in the printed manual. |
| Reconstitution | Please refer to the printed manual for detailed information. |

Data



> 95 % as determined by reducing SDS-PAGE.

Background

Pigment epithelium-derived factor, also known as PEDF, Serpin F1, and SERPINF1, is a multiple functional protein which has both anti-angiogenic activity and neurotrophic activity at the same time. PEDF is a secreted glycoprotein that belongs to the noninhibitory serpin. It has an alpha/beta core serine-protease inhibitor domain, three major beta-sheets, and ten alpha-helices. PEDF does not inhibit either serine or cysteine proteinases. PEDF exerts diverse physiological activities including anti-angiogenesis, anti-vasopermeability, anti-tumor, and neurotrophic activities. PEDF acts via

For Research Use Only

A Reliable Research Partner in Life Science and Medicine

Toll-free: 1-888-852-8623

Web: www.elabscience.com

Tel: 1-832-243-6086

Email: techsupport@elabscience.com

Fax: 1-832-243-6017

Recombinant Mouse Serpin F1/PEDF Protein (His Tag)

Catalog Number:PKSM040786



multiple high affinity ligands and cell receptors. It has been described as a natural angiogenesis inhibitor with neurotrophic and immune-modulation properties. PEDF induces macrophages apoptosis and necrosis through the activation of peroxisome proliferator-activated receptor-gamma by which PEDF could modulate inflammatory reactions in septic shock. It balances angiogenesis in the eye and blocks tumor progression.

For Research Use Only

A Reliable Research Partner in Life Science and Medicine

Toll-free: 1-888-852-8623

Tel: 1-832-243-6086

Fax: 1-832-243-6017

Web: www.elabscience.com

Email: techsupport@elabscience.com