

# FSTL1 Polyclonal Antibody

Catalog Number:E-AB-66578

**Note:** Centrifuge before opening to ensure complete recovery of vial contents.

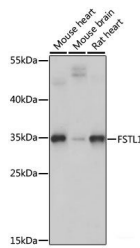
## Description

|                     |  |
|---------------------|--|
| <b>Reactivity</b>   | Human,Mouse,Rat  |
| <b>Immunogen</b>    | Recombinant fusion protein of human FSTL1 (NP_009016.1). |
| <b>Host</b>         | Rabbit   |
| <b>Isotype</b>      | IgG  |
| <b>Purification</b> | Affinity purification                                    |
| <b>Conjugation</b>  | Unconjugated   |
| <b>Formulation</b>  | PBS with 0.02% sodium azide, 50% glycerol, pH7.3.        |

## Applications Recommended Dilution

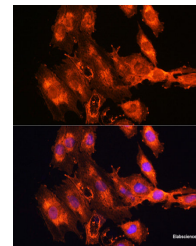
|           |              |
|-----------|--------------|
| <b>WB</b> | 1:500-1:2000 |
| <b>IF</b> | 1:50-1:200   |

## Data

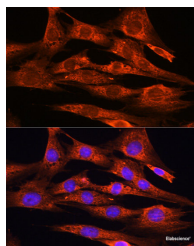


Western blot analysis of extracts of various cell lines using FSTL1 Polyclonal Antibody at dilution of 1:1000.

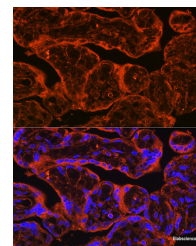
**Observed Mw:35kDa**  
**Calculated Mw:31kDa/34kDa**



Immunofluorescence analysis of C6 cells using FSTL1 Polyclonal Antibody at dilution of 1:100. Blue: DAPI for nuclear staining.



Immunofluorescence analysis of NIH/3T3 cells using FSTL1 Polyclonal Antibody at dilution of 1:100. Blue: DAPI for nuclear staining.



Immunofluorescence analysis of Human placenta using FSTL1 Polyclonal Antibody at dilution of 1:100. Blue: DAPI for nuclear staining.

## Preparation & Storage

**Storage** Store at -20°C. Avoid freeze / thaw cycles.

## Background

This gene encodes a protein with similarity to follistatin, an activin-binding protein. It contains an FS module, a follistatin-like sequence containing 10 conserved cysteine residues. This gene product is thought to be an autoantigen associated with

## For Research Use Only

A Reliable Research Partner in Life Science and Medicine

Toll-free: 1-888-852-8623

Web: [www.elabscience.com](http://www.elabscience.com)

Tel: 1-832-243-6086

Email: [techsupport@elabscience.com](mailto:techsupport@elabscience.com)

Fax: 1-832-243-6017

# FSTL1 Polyclonal Antibody

Catalog Number: E-AB-66578



rheumatoid arthritis.

---

## For Research Use Only

A Reliable Research Partner in Life Science and Medicine

Toll-free: 1-888-852-8623

Tel: 1-832-243-6086

Fax: 1-832-243-6017

Web: [www.elabscience.com](http://www.elabscience.com)

Email: [techsupport@elabscience.com](mailto:techsupport@elabscience.com)