

AXIN2 Polyclonal Antibody

Catalog Number:E-AB-67467



Note: Centrifuge before opening to ensure complete recovery of vial contents.

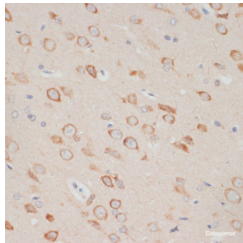
Description

| | |
|---------------------|---|
| Reactivity | Human,Mouse,Rat |
| Immunogen | A synthetic peptide of human AXIN2 (NP_004646.3). |
| Host | Rabbit |
| Isotype | IgG |
| Purification | Affinity purification |
| Conjugation | Unconjugated |
| Formulation | PBS with 0.02% sodium azide, 50% glycerol, pH7.3. |

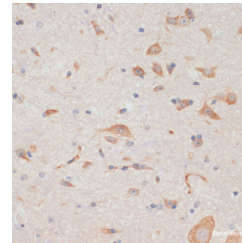
Applications Recommended Dilution

| | |
|------------|------------|
| IHC | 1:50-1:100 |
|------------|------------|

Data



Immunohistochemistry of paraffin-embedded Rat brain using AXIN2 Polyclonal Antibody at dilution of 1:100 (40x lens).



Immunohistochemistry of paraffin-embedded Mouse spinal cord using AXIN2 Polyclonal Antibody at dilution of 1:100 (40x lens).

Preparation & Storage

Storage Store at -20°C. Avoid freeze / thaw cycles.

Background

The Axin-related protein, Axin2, presumably plays an important role in the regulation of the stability of beta-catenin in the Wnt signaling pathway, like its rodent homologs, mouse conductin/rat axil. In mouse, conductin organizes a multiprotein complex of APC (adenomatous polyposis of the colon), beta-catenin, glycogen synthase kinase 3-beta, and conductin, which leads to the degradation of beta-catenin. Apparently, the deregulation of beta-catenin is an important event in the genesis of a number of malignancies. The AXIN2 gene has been mapped to 17q23-q24, a region that shows frequent loss of heterozygosity in breast cancer, neuroblastoma, and other tumors. Mutations in this gene have been associated with colorectal cancer with defective mismatch repair.

For Research Use Only

A Reliable Research Partner in Life Science and Medicine

Toll-free: 1-888-852-8623

Web: www.elabscience.com

Tel: 1-832-243-6086

Email: techsupport@elabscience.com

Fax: 1-832-243-6017