

CBX5 Monoclonal Antibody

Catalog Number:E-AB-22146



Note: Centrifuge before opening to ensure complete recovery of vial contents.

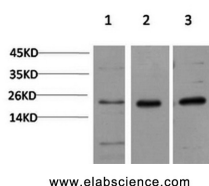
Description

Reactivity	Human,Mouse,Rat
Immunogen	Recombinant Protein of HP-1 α
Host	Mouse
Isotype	IgG
Clone	Clone:7B6
Purification	Protein A purification
Conjugation	Unconjugated
Formulation	PBS with 0.02% sodium azide and 50% glycerol pH 7.4.

Applications Recommended Dilution

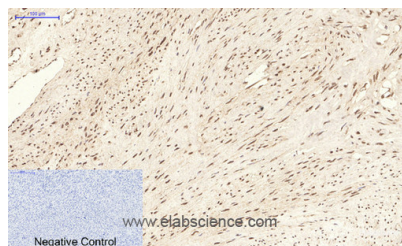
WB	1:500-2000
IHC	1:50-300

Data

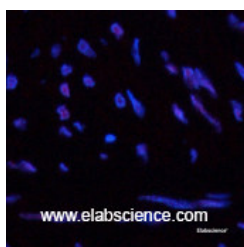


Western Blot analysis of 1) HeLa, 2)3T3, 3) PC-12 cells using CBX5 Monoclonal Antibody at dilution of 1:1000.

Observed Mw:22kDa



Immunohistochemistry of paraffin-embedded Human uterus tissue using CBX5 Monoclonal Antibody at dilution of 1:200.



Immunofluorescence analysis of Human uterus tissue using CBX5 Monoclonal Antibody at dilution of 1:200.

Preparation & Storage

Storage Store at -20°C. Avoid freeze / thaw cycles.

Background

This gene encodes a highly conserved nonhistone protein, which is a member of the heterochromatin protein family. The

For Research Use Only

A Reliable Research Partner in Life Science and Medicine

Toll-free: 1-888-852-8623

Web: www.elabscience.com

Tel: 1-832-243-6086

Email: techsupport@elabscience.com

Fax: 1-832-243-6017

CBX5 Monoclonal Antibody

Catalog Number:E-AB-22146



protein is enriched in the heterochromatin and associated with centromeres. The protein has a single N-terminal chromodomain which can bind to histone proteins via methylated lysine residues, and a C-terminal chromo shadow-domain (CSD) which is responsible for the homodimerization and interaction with a number of chromatin-associated nonhistone proteins. The encoded product is involved in the formation of functional kinetochore through interaction with essential kinetochore proteins. The gene has a pseudogene located on chromosome 3. Multiple alternatively spliced variants, encoding the same protein, have been identified.

For Research Use Only

A Reliable Research Partner in Life Science and Medicine

Toll-free: 1-888-852-8623

Web: www.elabscience.com

Tel: 1-832-243-6086

Email: techsupport@elabscience.com

Fax: 1-832-243-6017