

PI 3 kinase p85 alpha Monoclonal Antibody

Catalog Number: E-AB-22164

1 Publications



Note: Centrifuge before opening to ensure complete recovery of vial contents.

Description

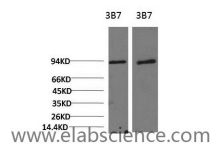
| | |
|---------------------|--|
| Reactivity | Mouse, Rat |
| Immunogen | Recombinant Protein |
| Host | Mouse |
| Isotype | IgG |
| Purification | Protein A purification |
| Formulation | PBS with 0.02% sodium azide, 0.5% protective protein and 50% glycerol, pH7.4 |

Applications

Recommended Dilution

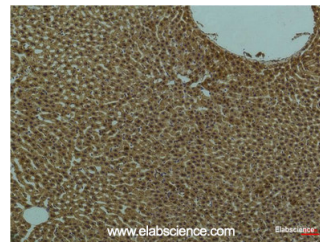
| | |
|------------|-------------|
| WB | 1:1000-2000 |
| IHC | 1:100-200 |

Data

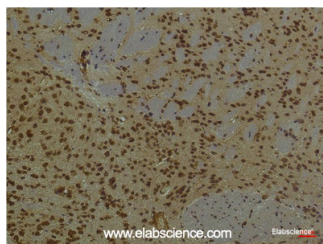


Western Blot analysis of 1) 3T3, 2) Rat liver using PI 3 kinase p85 alpha Monoclonal Antibody at dilution of 1:2000.

Observed Mw:85kDa



Immunohistochemistry of paraffin-embedded Rat liver tissue using PI 3 kinase p85 alpha Monoclonal Antibody at dilution of 1:200.



Immunohistochemistry of paraffin-embedded Mouse brain tissue using PI 3 kinase p85 alpha Monoclonal Antibody at dilution of 1:200.

Preparation & Storage

Storage Store at -20°C. Avoid freeze / thaw cycles.

Background

Binds to activated (phosphorylated) protein-Tyr kinases, through its SH2 domain, and acts as an adapter, mediating the association of the p110 catalytic unit to the plasma membrane. Necessary for the insulin-stimulated increase in glucose uptake and glycogen synthesis in insulin-sensitive tissues.

For Research Use Only

A Reliable Research Partner in Life Science and Medicine

Toll-free: 1-888-852-8623

Web: www.elabscience.com

Tel: 1-832-243-6086

Email: techsupport@elabscience.com

Fax: 1-832-243-6017