

Note: Centrifuge before opening to ensure complete recovery of vial contents.

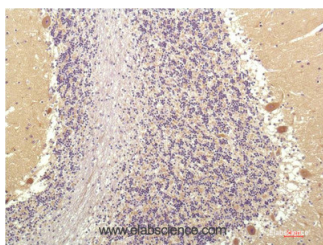
Description

Reactivity	Human,Mouse,Rat
Immunogen	Synthetic Peptide of SGK1
Host	Mouse
Isotype	IgG
Clone	Clone:4D12
Purification	Protein A purification
Formulation	PBS with 0.02% sodium azide, 0.5% protective protein and 50% glycerol, pH7.4

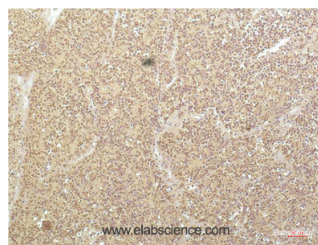
Applications Recommended Dilution

IHC	1:100-200
------------	-----------

Data



Immunohistochemistry of paraffin-embedded Human brain tissue using SGK1 Monoclonal Antibody at dilution of 1:200.



Immunohistochemistry of paraffin-embedded Human kidney carcinoma tissue using SGK1 Monoclonal Antibody at dilution of 1:200.

Preparation & Storage

Storage Store at -20°C. Avoid freeze / thaw cycles.

Background

Protein kinase that plays an important role in cellular stress response. Activates certain potassium, sodium, and chloride channels, suggesting an involvement in the regulation of processes such as cell survival, neuronal excitability and renal sodium excretion. Sustained high levels and activity may contribute to conditions such as hypertension and diabetic nephropathy. Mediates cell survival signals, phosphorylates and negatively regulates pro-apoptotic FOXO3A. Phosphorylates NEDD4L, which leads to its inactivation and to the subsequent activation of various channels and transporters such as ENaC, KCNA3/Kv1.3 or EAAT1. Isoform 2 exhibited a greater effect on cell plasma membrane expression of ENaC and Na(+) transport than isoform 1.

For Research Use Only

A Reliable Research Partner in Life Science and Medicine

Toll-free: 1-888-852-8623

Web: www.elabscience.com

Tel: 1-832-243-6086

Email: techsupport@elabscience.com

Fax: 1-832-243-6017