

# Vimentin Polyclonal Antibody

Catalog Number:E-AB-36172



**Note:** Centrifuge before opening to ensure complete recovery of vial contents.

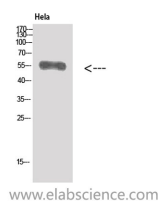
## Description

<b>Reactivity</b>	Human,Mouse,Rat
<b>Immunogen</b>	Synthesized peptide derived from Vimentin
<b>Host</b>	Rabbit
<b>Isotype</b>	IgG
<b>Purification</b>	Affinity purification
<b>Formulation</b>	PBS with 0.02% sodium azide,0.5% protective protein and 50% glycerol pH 7.4.

## Applications Recommended Dilution

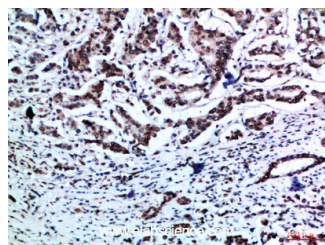
<b>WB</b>	1:500-2000
<b>ELISA</b>	1:10000-20000

## Data

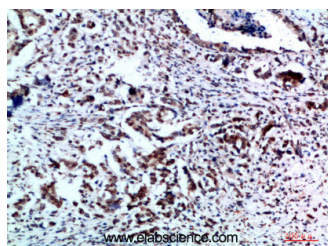


Western Blot analysis of HeLa cells using Vimentin Polyclonal Antibody at dilution of 1:500.

**Observed Mw:55kDa**  
**Calculated Mw:54kDa**



Immunohistochemistry of paraffin-embedded Human breast cancer tissue using Vimentin Polyclonal Antibody at dilution of 1:200.



Immunohistochemistry of paraffin-embedded Human breast cancer tissue using Vimentin Polyclonal Antibody at dilution of 1:200.

## Preparation & Storage

**Storage** Store at -20°C. Avoid freeze / thaw cycles.

## Background

Vimentins are class-III intermediate filaments found in various non-epithelial cells, especially mesenchymal cells. Vimentin is attached to the nucleus, endoplasmic reticulum, and mitochondria, either laterally or terminally.

## For Research Use Only

A Reliable Research Partner in Life Science and Medicine

Toll-free: 1-888-852-8623

Web: [www.elabscience.com](http://www.elabscience.com)

Tel: 1-832-243-6086

Email: [techsupport@elabscience.com](mailto:techsupport@elabscience.com)

Fax: 1-832-243-6017