

Note: Centrifuge before opening to ensure complete recovery of vial contents.

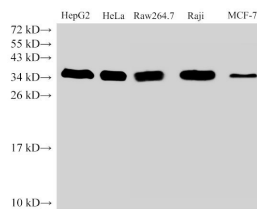
Description

Reactivity	Human,Mouse,Rat
Immunogen	Recombinant Human Proliferating cell nuclear antigen protein
Host	Rabbit
Isotype	IgG
Purification	Antigen Affinity Purification
Conjugation	Unconjugated
Formulation	PBS with 0.05% Proclin300, 50% glycerol, pH7.3.

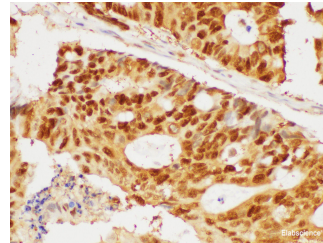
Applications Recommended Dilution

WB	1:500-1:2000
IHC	1:50-1:200

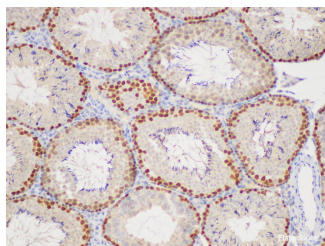
Data



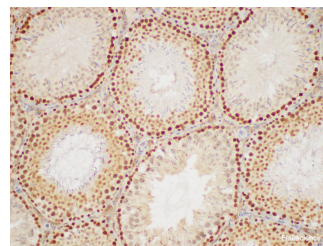
Western Blot analysis of HepG2, HeLa, Raw264.7 Raji and MCF-7 cells using PCNA Polyclonal Antibody at dilution of 1:500
Observed Mw:34 kDa
Calculated Mw:28 kDa



Immunohistochemistry of paraffin-embedded Human colon cancer using PCNA Polyclonal Antibody at dilution of 1:50



Immunohistochemistry of paraffin-embedded Mouse testis using PCNA Polyclonal Antibody at dilution of 1:50



Immunohistochemistry of paraffin-embedded Rat testis using PCNA Polyclonal Antibody at dilution of 1:50

Preparation & Storage

Storage Store at -20°C. Avoid freeze / thaw cycles.

Background

This protein is an auxiliary protein of DNA polymerase delta and is involved in the control of eukaryotic DNA replication by increasing the polymerase's processivity during elongation of the leading strand. Induces a robust stimulatory effect

For Research Use Only

A Reliable Research Partner in Life Science and Medicine

Toll-free: 1-888-852-8623

Web: www.elabscience.com

Tel: 1-832-243-6086

Email: techsupport@elabscience.com

Fax: 1-832-243-6017

PCNA Polyclonal Antibody

Catalog Number: E-AB-40413



on the 3'-5' exonuclease and 3'-phosphodiesterase, but not apurinic-apyrimidinic (AP) endonuclease, APEX2 activities. Has to be loaded onto DNA in order to be able to stimulate APEX2.

For Research Use Only

A Reliable Research Partner in Life Science and Medicine

Toll-free: 1-888-852-8623

Tel: 1-832-243-6086

Fax: 1-832-243-6017

Web: www.elabscience.com

Email: techsupport@elabscience.com