

## KRT9 Polyclonal Antibody

Catalog No. E-AB-63273

**Note:** Centrifuge before opening to ensure complete recovery of vial contents.

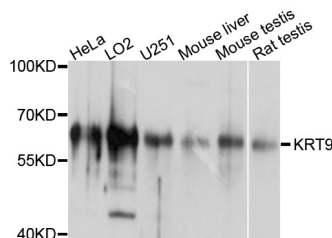
### Description

|                     |  |
|---------------------|--|
| <b>Reactivity</b>   | Human, Mouse, Rat                                    |
| <b>Immunogen</b>    | Recombinant protein of human KRT9                    |
| <b>Host</b>         | Rabbit   |
| <b>Isotype</b>      | IgG  |
| <b>Purification</b> | Affinity purification                                |
| <b>Conjugation</b>  | Unconjugated   |
| <b>Buffer</b>       | PBS with 0.02% sodium azide and 50% glycerol pH 7.4. |

### Applications Recommended Dilution

**WB** 1:1000-1:4000

### Data



Western blot analysis of extracts of various cell lines with KRT9 Polyclonal Antibody

**Observed Mw:62kDa**  
**Calculated Mw:62kDa**

### Preparation & Storage

**Storage** Store at -20°C. Avoid freeze / thaw cycles.

### Background

This gene encodes the type I keratin 9, an intermediate filament chain expressed only in the terminally differentiated epidermis of palms and soles. Mutations in this gene cause epidermolytic palmoplantar keratoderma.

### For Research Use Only