

# (KO Validated) Vimentin Polyclonal Antibody

Catalog Number:E-AB-63601



**Note:** Centrifuge before opening to ensure complete recovery of vial contents.

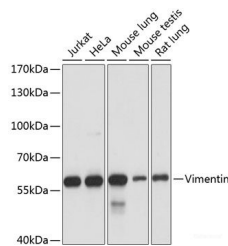
## Description

<b>Reactivity</b>	Human,Mouse,Rat
<b>Immunogen</b>	Recombinant fusion protein of human Vimentin (NP_003371.2).
<b>Host</b>	Rabbit
<b>Isotype</b>	IgG
<b>Purification</b>	Affinity purification
<b>Conjugation</b>	Unconjugated
<b>Formulation</b>	PBS with 0.02% sodium azide, 50% glycerol, pH7.3.

## Applications Recommended Dilution

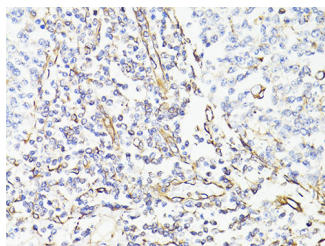
<b>WB</b>	1:500-1:2000
<b>IHC</b>	1:50-1:200
<b>IF</b>	1:50-1:200

## Data

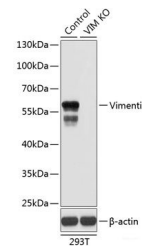


Western blot analysis of extracts of various cell lines using Vimentin Polyclonal Antibody at dilution of 1:1000.

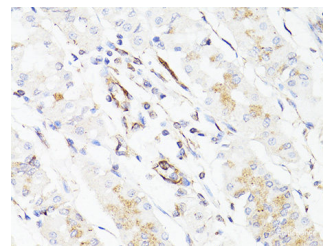
**Observed Mw:57kDa**  
**Calculated Mw:53kDa**



Immunohistochemistry of paraffin-embedded Human tonsil using Vimentin Polyclonal Antibody at dilution of 1:150 (40x lens).



Western blot analysis of extracts from normal (control) and Vimentin knockout (KO) 293T cells using Vimentin Polyclonal Antibody at dilution of 1:1000.



Immunohistochemistry of paraffin-embedded Human stomach using Vimentin Polyclonal Antibody at dilution of 1:150 (40x lens).

## For Research Use Only

A Reliable Research Partner in Life Science and Medicine

Toll-free: 1-888-852-8623

Web: [www.elabscience.com](http://www.elabscience.com)

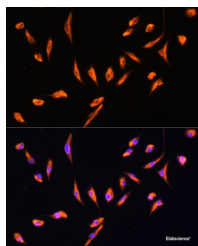
Tel: 1-832-243-6086

Email: [techsupport@elabscience.com](mailto:techsupport@elabscience.com)

Fax: 1-832-243-6017

# (KO Validated) Vimentin Polyclonal Antibody

Catalog Number:E-AB-63601



Immunofluorescence analysis of L929 cells using Vimentin Polyclonal Antibody at dilution of 1:100.  
Blue: DAPI for nuclear staining.

## Preparation & Storage

**Storage** Store at -20°C. Avoid freeze / thaw cycles.

## Background

This gene encodes a member of the intermediate filament family. Intermediate filaments, along with microtubules and actin microfilaments, make up the cytoskeleton. The protein encoded by this gene is responsible for maintaining cell shape, integrity of the cytoplasm, and stabilizing cytoskeletal interactions. It is also involved in the immune response, and controls the transport of low-density lipoprotein (LDL)-derived cholesterol from a lysosome to the site of esterification. It functions as an organizer of a number of critical proteins involved in attachment, migration, and cell signaling. Mutations in this gene causes a dominant, pulverulent cataract.

## For Research Use Only

A Reliable Research Partner in Life Science and Medicine

Toll-free: 1-888-852-8623

Web: [www.elabscience.com](http://www.elabscience.com)

Tel: 1-832-243-6086

Email: [techsupport@elabscience.com](mailto:techsupport@elabscience.com)

Fax: 1-832-243-6017