

S100A8 Polyclonal Antibody

Catalog Number:E-AB-65264

Note: Centrifuge before opening to ensure complete recovery of vial contents.

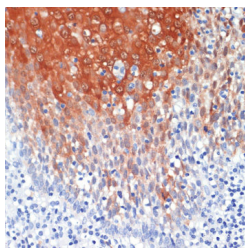
Description

Reactivity	Human,Mouse,Rat
Immunogen	Recombinant fusion protein of human S100A8 (NP_002955.2).
Host	Rabbit
Isotype	IgG
Purification	Affinity purification
Conjugation	Unconjugated
Formulation	PBS with 0.02% sodium azide, 50% glycerol, pH7.3.

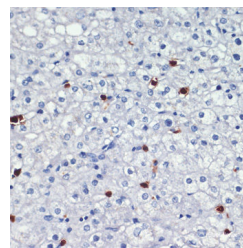
Applications Recommended Dilution

IHC	1:50-1:100
IF	1:50-1:100

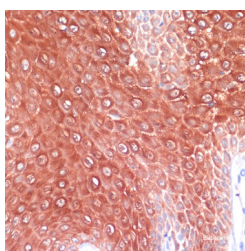
Data



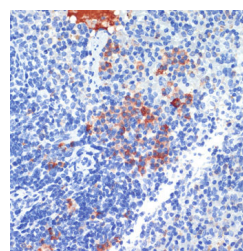
Immunohistochemistry of paraffin-embedded Human tonsil using S100A8 Polyclonal Antibody at dilution of 1:200 (40x lens).



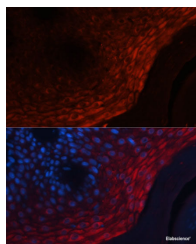
Immunohistochemistry of paraffin-embedded Human liver using S100A8 Polyclonal Antibody at dilution of 1:200 (40x lens).



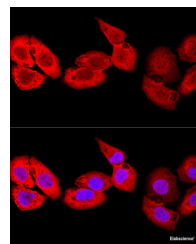
Immunohistochemistry of paraffin-embedded Human skin using S100A8 Polyclonal Antibody at dilution of 1:200 (40x lens).



Immunohistochemistry of paraffin-embedded Mouse spleen using S100A8 Polyclonal Antibody at dilution of 1:200 (40x lens).



Immunofluorescence analysis of Human skin cancer using S100A8 Polyclonal Antibody at dilution of



Confocal immunofluorescence analysis of U-2 OS cells using S100A8 Polyclonal Antibody at dilution

For Research Use Only

A Reliable Research Partner in Life Science and Medicine

Toll-free: 1-888-852-8623

Web: www.elabscience.com

Tel: 1-832-243-6086

Email: techsupport@elabscience.com

Fax: 1-832-243-6017

S100A8 Polyclonal Antibody

Catalog Number:E-AB-65264



1:100 (40x lens). Blue: DAPI for nuclear staining.

of 1:100. Blue: DAPI for nuclear staining.

Preparation & Storage

Storage Store at -20°C. Avoid freeze / thaw cycles.

Background

The protein encoded by this gene is a member of the S100 family of proteins containing 2 EF-hand calcium-binding motifs. S100 proteins are localized in the cytoplasm and/or nucleus of a wide range of cells, and involved in the regulation of a number of cellular processes such as cell cycle progression and differentiation. S100 genes include at least 13 members which are located as a cluster on chromosome 1q21. This protein may function in the inhibition of casein kinase and as a cytokine. Altered expression of this protein is associated with the disease cystic fibrosis. Multiple transcript variants encoding different isoforms have been found for this gene.

For Research Use Only

A Reliable Research Partner in Life Science and Medicine

Toll-free: 1-888-852-8623

Web: www.elabscience.com

Tel: 1-832-243-6086

Email: techsupport@elabscience.com

Fax: 1-832-243-6017